

Chic 攻略

JULY

19-20

INFO |
No.005 |

The Latest Fashion Updates |



The ultimate
new season
packed with
powerful
pieces

CROSSRUNNER®

URBAN

· Outdoor Style ·

Must



have

NORTH HARBOUR

極簡時尚新主意

COLLECTION | 2019
2020

BUYER'S GUIDE

毎日使えの優秀品



INSPIRE

设计师洗牌
纷乱中寻找新秩序

FUN LIFESTYLE

做个时尚狂热粉
时髦是一种生活态度
追求至美灵魂 · 气势登场

STYLISH FOCUS

被时代选择的艺术x品牌
彩色单品 · 今季无限可能
解构BASICS新潮搭

COMFORT COLORS®

本年要注目
の人気トレンド

色で心と暮らしを元気に!

GILDAN®

Authorized Distributor Of



GILDAN CROSSRUNNER[®] ANVIL[®] NORTH HARBOUR SARRA[®]
COMFORT COLORS[®] American Apparel[®]



THIS

JUST



IN



142 New Arrivals

New Now | The basic garments that combine with any chic style.
@Wear them now, thank us later



KEY FASHION TRENDS THIS SEASON

Worth

COLLECTIONS 19-20

CONTENTS

DEPARTMENTS

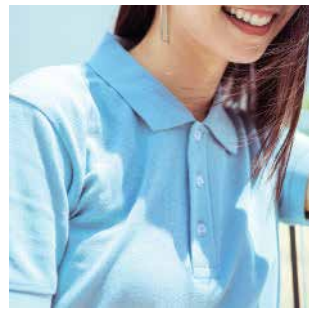
T



005 / T-SHIRT

- 07 Gildan Softstyle 63000 / 63V00 / 63V00L
- 11 Gildan Premium Cotton 76000 / 76000L / 76000B
- 19 Gildan Hammer HA00 / HA30 / HA40
- 25 Gildan Premium Cotton 76400 / 76600 / 76500 / 76700
- 33 Gildan Ultra Cotton 2000 / 2400 / 2200
- 39 Gildan Heavy Cotton 5000
- 41 Comfort Colors 1717
- 43 American Apparel 2001W
- 44 Anvil 980 / 939 / 987 / 6755

P



053 / POLO

- 55 North Harbour Soft-Touch Polo NHB 2400 / NHB 24400
- 59 Gildan Premium Cotton 6800 / 95800
- 61 North Harbour Signature Polo NHB 2100 / NHB 2200 / NHB 2300 / NHB 2500 / NHB 2700 / NHB 2800 / NHB 2900

A



075 / ACTIVEWEAR

- 77 Crossrunner Performance Polo CRP 7200
 - 79 Gildan Performance P4B100
 - 81 Crossrunner Athletic Polo CRP 2100 / CRP 2300 / CRP 2400 / CRP 2500 / CRP 1300 / CRP 1400 / CRP 1500 / CRP 1600 / CRP 2900
 - 91 Crossrunner Sublimated Polo CRP 2700 / CRP 2800 / CRP 3000
-
- 99 Crossrunner Performance Tee CRR 3600
 - 101 Gildan Performance 3B100 / 4B100 / 4B100B
 - 105 Crossrunner Performance Tee CRR 3600B / CRR 36400
 - 107 Crossrunner Plus CRR 3900 / CRR 9600
 - 111 Crossrunner Athletic Tee CRR 1100 / CRR 1200 / CRR 1300
 - 115 Crossrunner Sublimated Jersey CRR 1800 / CRR 1900 / CRR 2000 / CRR 2100 / CRR 2200 / CRR 2300

- 125 Crossrunner Singlet CRV 1300 / CRV 1600
- 129 Crossrunner Tracksuit CRT 1100J / CRT 1200J / CRT 1100P
- 133 Crossrunner Basketball Suit CRB 1100 / CRB 1200 / CRB 1300

O



139 / OUTERWEAR

- 141 North Harbour Bomber Jacket NHJ 1100
- 143 Gildan Heavy Blend 88000 / 88500 / 88600 / 18700 / 18800
- 153 Crossrunner Varsity jacket CRJ 1100 / CRJ 1200

W



157 / PREMIUM WORKWEAR

- 159 North Harbour Dress Shirt NHB 1400 / NHB 1500 / NHB 2000
- 165 North Harbour Corporate Imagewear NHB 1700 / NHB 1800 / NHB 1900 / NHB 2600 / NHB 3000
- 173 North Harbour Denim Shirts NHB 3100

M



175 / MUSLIMAH

- 177 Sarra Fashion Collection SMW 1300 / SMW 1300M / SMW 1500 / SMW 1500M / SMW 1600
- 183 Sarra Sublimated Muslimah SMW 1700
- 184 Sarra Sporty Muslimah SMW 1800
- 185 Sarra Denim Muslimah SMW 1900

H



187 / HOMEWEAR & ACCESSORIES

- 187 North Harbour Baseball Cap NHC 1100
- 189 North Harbour Snapback NHC 1200
- 191 North Harbour Soft-Touch Hand Towel NHT 1100
- 193 North Harbour Soft-Touch Bath Towel NHT 2100

No wardrobe should be without a staple T-shirt.



From the set of sleeve to the turn of the hem, we've paid attention to, and perfected to every detail when it comes to the structure of your shirt.



GILDAN® COMFORT COLORS® American Apparel® ANVIL®

EMBRACE YOUR BASIC

Whether you're after simple tees to pair with jeans, or a printed stand-out look, we've got all you need to nail the basics.

GILDAN®

We've got a tee to suit any need. Find your favourite T-Shirt fabric: 100% ring spun cotton in hearty 210 or 180 g/m², or a lighter 150 g/m² weight. All durable, they come in amazing colors, can handle just about any kind of decorating technique.



In lightweight 4.5 oz cotton jersey for outstanding softness & supreme comfort!

GILDAN® Softstyle®

63000 Adult T-Shirt

4.5 oz/yd² 150 g/m² Year Aways

- 100% ring spun cotton preshrunk jersey knit
- Fiber content varies by color
- 2 cm rib collar
- Taped neck and shoulders
- Double needle sleeve and bottom hems
- Quarter-turned to eliminate center crease
- 21 colors
- Sizes : XS - 2XL

RRP : 25.90 MYR / 10.90 SGD

Size	XS	S	M	L	XL	2XL
Width	44	47	50	53	56	59
Length	64	67	70	73	75	77

*MEASUREMENTS ARE PRESENTED IN CM



*C = % Cotton, P = % Polyester

A lightweight V-necked tee that's cool and trendy in the summer heat! 🍷

GILDAN®
Softstyle®



OEKO-TEX®
CONFIDENCE IN TEXTILES
STANDARD 100
68255 OeTI
Tested for harmful substances
www.oeko-tex.com/standard100

63V00

Adult V-Neck T-Shirt

4.5 oz/yd² 150 g/m²

- 100% ring spun cotton preshrunk jersey knit
- Fiber content varies by color
- 1.5 cm mitered v-neck collar
- Taped neck and shoulders
- Double needle sleeve and bottom hems
- Quarter-turned to eliminate center crease
- 5 colors
- Sizes : XS - 2XL

RRP : 35.90 MYR / 14.90 SGD

Size	XS	S	M	L	XL	2XL
Width	44	47	50	53	56	59
Length	64	67	70	73	75	77

*MEASUREMENTS ARE PRESENTED IN CM



32 C
Navy



30 N
White



295 H
RS Sport Grey *(90C/10P)



42 C
Charcoal



36 C
Black

63V00L

Ladies V-Neck T-Shirt

4.5 oz/yd² 150 g/m²

- 100% ring spun cotton preshrunk jersey knit
- Fiber content varies by color
- Semi-fitted contoured silhouette with side seam
- 1.5 cm mitered v-neck collar
- Taped neck and shoulders
- Double needle sleeve and bottom hems
- 6 colors
- Sizes : LS - LXL

RRP : 35.90 MYR / 14.90 SGD

Size	LS	LM	LL	LXL
Width	41	43	46	49
Length	59	61	64	66

*MEASUREMENTS ARE PRESENTED IN CM



10 C
Heliconia



40 C
Red



32 C
Navy



30 N
White



295 H
RS Sport Grey *(90C/10P)



36 C
Black

*C = % Cotton, P = % Polyester

GILDAN®



PREMIUM

PERFECT SHAPE IN 76000

MEN'S
SIZES

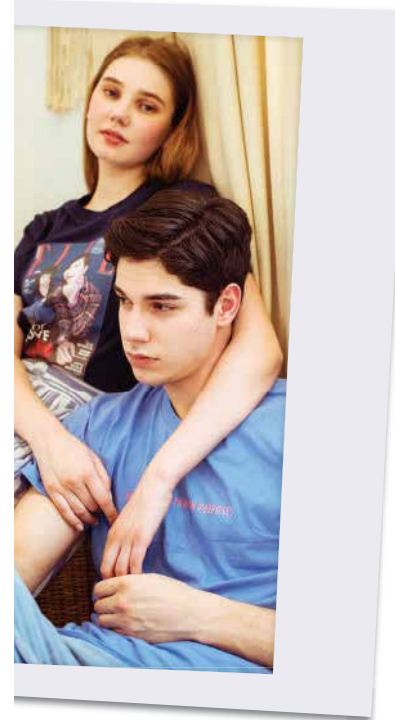
LADIES'
SIZES

KIDS'
SIZES

COMFORT

CLASSIC

AMAZING COLORS



Premium

THE GUIDE TO A BETTER LIFE

Your best T-shirt should be like your bed; it just feels like you are home when you are in it. Basics are the building blocks of a whip-smart wardrobe. Style them like a pro!

[Shop The Collection](#)

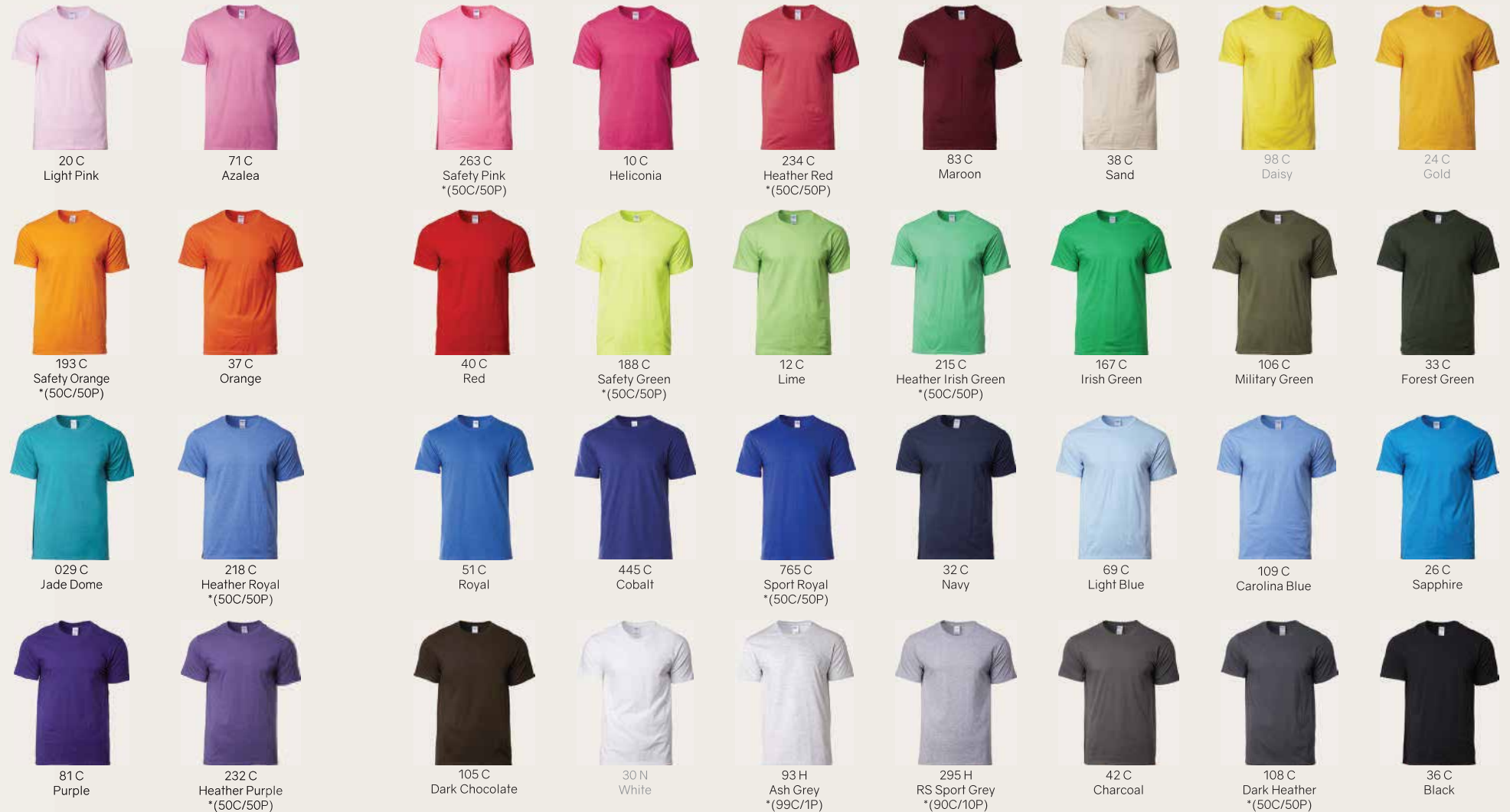


OEKO-TEX®
CONFIDENCE IN TEXTILES
STANDARD 100
68255 OeTI
Tested for harmful substances
www.oeko-tex.com/standard100

GILDAN®
PREMIUM
Cotton™

A classic T-shirt with the focus on comfort!

With so many sizes and colors available, you're sure to find one that takes your fancy :)



*C = % Cotton, P = % Polyester

STEP OUT
IN STYLE

IT'S A DATE



“ A MUST
FOR YOUR
SPRING &
SUMMER
WARDROBE ”

76000
Adult T-Shirt

5.3 oz/yd² 180 g/m²

- 100% ring spun cotton preshrunk jersey knit
- Fiber content varies by color
- 2 cm rib collar
- Taped neck and shoulders
- Double needle sleeve and bottom hems
- Quarter-turned to eliminate center crease
- Satin Label • 36 colors
- XS - 5XL (Black, Navy, Red, RS Sport Grey, White)
- XS - 3XL (All the rest colors)

RRP : 29.90 MYR / 11.90 SGD

Size	XS	S	M	L	XL	2XL	3XL	4XL	5XL
Width	44	47	50	53	56	59	63	66	71
Length	64	67	70	73	75	77	80	83	86

*MEASUREMENTS ARE PRESENTED IN CM

For Everywhere 🍷 You go.

Day-to-night styles
with season-to-season
appeal redefine
casual city dressing.



Basic for her..



76000L Ladies T-Shirt

5.3 oz/yd² 180 g/m²

- 100% ring spun cotton preshrunk jersey knit
- Fiber content varies by color
- Semi-fitted contoured silhouette with side seam
- 1.3 cm rib collar
- Taped neck and shoulders
- Double needle sleeve and bottom hems
- Satin Label • 22 colors
- Sizes : LS - LXL

RRP : 29.90 MYR / 11.90 SGD

Size	LS	LM	LL	LXL
Width	41	43	46	49
Length	59	61	64	66

*MEASUREMENTS ARE PRESENTED IN CM



*C = % Cotton, P = % Polyester

Super Children's Tops No.1

Kids ♥ Wear

INCREDIBLY SOFT + STYLISH

NO REASON TO BE CUTE FOR ♥



COTTON & CANDY

Spring tee color trends

만들어진 편안한 룬웨어
어떤 계절에도 하루 종일 쾌적하게, 다양하게 스타일링하기 좋은 캐주얼한 상의 라인업

GILDAN®
PREMIUM
Cotton™

76000B
Youth T-Shirt

5.3 oz/yd² 180 g/m²

- 100% ring spun cotton preshrunk jersey knit
- Fiber content varies by color
- 1.5 cm rib collar • Sideseamed
- Taped neck and shoulders
- Double needle sleeve and bottom hems
- CPSIA tracking label compliant
- Satin Label • 20 colors
- Sizes : YXS - YXL

RRP : 26.90 MYR / 10.90 SGD

Size	YXS	YS	YM	YL	YXL
Width	33	36	38	41	43
Length	45	48	51	54	58

*MEASUREMENTS ARE PRESENTED IN CM



Sun
Basic T



Urban
Playwear



*C = % Cotton, P = % Polyester

HA00

Adult T-Shirt

6.1 oz/yd² 210 g/m² 

- 100% combed ring spun cotton preshrunk jersey knit
- Fiber content varies by color
- High stitch density for smoother printing surface
- 2.3 cm rib collar • Taped neck and shoulders
- 2 cm double-needle sleeve and bottom hems
- Quarter-turned to eliminate center crease
- Classic Fit • 16 colors
- Sizes : XS - 2XL

RRP : 34.90 MYR / 13.90 SGD

Size	XS	S	M	L	XL	2XL
Width	44	47	50	53	56	59
Length	64	67	70	73	75	77

*MEASUREMENTS ARE PRESENTED IN CM



*C = % Cotton, P = % Polyester N = New color to this style



HA30 NEW

Adult T-Shirt with Pocket

6.1
oz/yd²

210
g/m²



- 100% combed ring spun cotton preshrunk jersey knit
- Fiber content varies by color
- High stitch density for smoother printing surface
- 2.3 cm rib collar • Taped neck and shoulders
- Single needle left chest set pocket
- 2 cm double needle pocket, sleeve and bottom hems

- Quarter-turned to eliminate center crease
- Classic Fit • 4 colors
- Sizes : XS - 2XL

RRP : 32.90 MYR / 13.90 SGD

Size	XS	S	M	L	XL	2XL
Width	44	47	50	53	56	59
Length	64	67	70	73	75	77

*MEASUREMENTS ARE PRESENTED IN CM



36 C
Black



32 C
Navy



295 H
RS Sport Grey
*(90C/10P)



30 N
White



698

351 Comments • 340 Shares





HA40 # MORE THAN JUST CASUAL



OEKO-TEX®
CONFIDENCE IN TEXTILES
STANDARD 100
68255 OeTI
Tested for harmful substances
www.oeko-tex.com/standard100



36 C
Black



32 C
Navy

CASUAL
MORE THAN



295 H
RS Sport Grey
*(90C/10P)



30 N
White

wardrobe essentials

HA40 **NEW** Adult Long Sleeve T-Shirt

6.1 oz/yd² 210 g/m²

- 100% combed ring spun cotton preshrunk jersey knit
- Fiber content varies by color
- High stitch density for smoother printing surface
- 2.3 cm rib collar
- Taped neck and shoulders
- 2 cm double needle bottom hem

- Quarter-turned to eliminate center crease
- Rib cuffs • Classic Fit • 4 colors
- Sizes : XS - 2XL

RRP : 39.90 MYR / 16.90 SGD

Size	XS	S	M	L	XL	2XL
Width	44	47	50	53	56	59
Length	63	66	69	72	74	76

*MEASUREMENTS ARE PRESENTED IN CM



SIMPLE MADE BETTER

Ultimate Ease

Original looks with endless possibilities. Sailing through the day in undeniable style. Even a casual t-shirt style gains significantly more sophistication.



GILDAN®
PREMIUM
Cotton™

5.3 oz/yd² 180 g/m²

76400

ADULT LONG SLEEVE T-SHIRT

- 100% ring spun cotton preshrunk jersey knit
- Fiber content varies by color
- 2 cm rib collar
- Taped neck and shoulders
- Double needle sleeve and bottom hems
- Quarter-turned to eliminate center crease
- 5 colors
- Satin Label
- Sizes : S - 2XL

RRP : 32.90 MYR / 13.90 SGD

Size	S	M	L	XL	2XL
Width	47	50	53	56	59
Length	66	69	72	74	76

*MEASUREMENTS ARE PRESENTED IN CM

Simplicity is key.

SMOOTH COMFORT

The nice thing about Gildan is its simplicity. It's quiet, subtle.

STYLE OF THE MOMENT, FOR EVERY MOMENT



40 C
Red



36 C
Black



30 N
White



295 H
RS Sport Grey
*(90C/10P)



32 C
Navy

*C = % Cotton, P = % Polyester



76600 # ADULT RINGER T-SHIRT

GILDAN®
PREMIUM
Cotton™

THE MOMENT WHEN WORDS
CAN'T DESCRIBE HOW I
FEEL...



📍 CANADA 1984, GILDAN

GILDAN®

OEKO-TEX®
CONFIDENCE IN TEXTILES
STANDARD 100
68255 OeTI
Tested for harmful substances
www.oeko-tex.com/standard100



76600 Adult Ringer T-Shirt

5.3 oz/yd² 180 g/m²

- 100% ring spun cotton preshrunk jersey knit
- Fiber content varies by color
- Double needle bottom hem
- Contrast neck and sleeve bands
- Quarter-turned to eliminate center crease
- Satin Label

- 7 colors combinations
- Sizes : XS - 2XL

RRP : 32.90 MYR / 13.90 SGD

Size	XS	S	M	L	XL	2XL
Width	44	47	50	53	56	59
Length	64	67	70	73	75	77

*MEASUREMENTS ARE PRESENTED IN CM



FA 109
Carolina Blue / Navy



FC 295
RS Sport Grey*/Red
(90C/10P)



FA 295
RS Sport Grey*/Navy
(90C/10P)



FB 295
RS Sport Grey*/Black
(90C/10P)



FC 030
White / Red



FE 030
White / Royal



FA 030
White / Navy

*C = % Cotton, P = % Polyester





Sporty Trend.

Something flexible
and really simple.



76500
 Adult Raglan T-Shirt

5.3 **180**
 oz/yd² g/m²

- 100% ring spun cotton preshrunk jersey knit
- Fiber content varies by color
- Raglan short sleeves
- Contrast color 2 cm seamed collar
- Double needle sleeve and bottom hems
- Quarter-turned to eliminate center crease

- Satin Label
- Sizes : S - 2XL

RRP : 32.90 MYR / 13.90 SGD

Size	S	M	L	XL	2XL
Width	47	50	53	56	59
Length	67	70	73	75	77

*MEASUREMENTS ARE PRESENTED IN CM



GILDAN
PREMIUM
Cotton™



OEKO-TEX®
CONFIDENCE IN TEXTILES
STANDARD 100
68255-0011
Tested for harmful substances
www.oeko-tex.com/standard100

EVERYDAY T-SHIRT

Perfect Fit

We love the raglan comeback trend. Stylish, comfortable and easy to pair with any of your favourite bottoms.

GILDAN
PREMIUM
Cotton™

5.3 oz/yd² 180 g/m²

76700

ADULT 3/4 SLEEVE RAGLAN T-SHIRT

- 100% ring spun cotton preshrunk jersey knit
- Fiber content varies by color
- Contrast color set-in collar and 3/4 raglan sleeve
- Single needle top stitching at back neck
- Double needle sleeve and bottom hems
- Quarter-turned to eliminate center crease
- 5 colors combinations
- Satin Label
- Sizes : S - 2XL

RRP : 39.90 MYR / 16.90 SGD

Size	S	M	L	XL	2XL
Width	47	50	53	56	59
Length	67	70	73	75	77

*MEASUREMENTS ARE PRESENTED IN CM

Comfort in style.



FB 295
Sport Grey* / Black
(90C/10P)



FC 030
White / Red



FE 030
White / Royal



FB 030
White / Black



FS 036
Black / White

2000

Adult T-Shirt



- 100% cotton preshrunk jersey knit
- Seamless double-needle 2.2 cm collar
- Double needle sleeve and bottom hems
- Taped neck and shoulders
- Quarter-turned to eliminate center crease
- Fiber content varies by color • 13 colors

- Sizes :
- S - 2XL (Heather Series)
- S - 3XL (Red, Charcoal, Royal, Military Green)
- S - 5XL (White, Black, Navy, Sport Grey)

RRP : 34.90 MYR / 13.90 SGD

Size	S	M	L	XL	2XL	3XL	4XL	5XL
Width	45	51	56	61	66	71	76	81
Length	71	73	76	78	81	84	86	89

*MEASUREMENTS ARE PRESENTED IN CM



ULTRA COTTON



*C = % Cotton, P = % Polyester



GILDAN®

2400
Adult Long Sleeve T-Shirt

6.0 oz/yd² 203 g/m² TAA Approved

- 100% cotton preshrunk jersey knit
- Fiber content varies by color
- Seamless double-needle 2.2 cm collar
- Rib cuffs
- Double-needle bottom hem
- Taped neck and shoulders

- Quarter-turned to eliminate center crease
- Classic Fit
- Sizes : S - 2XL

RRP : 39.90 MYR / 16.90 SGD

Size	S	M	L	XL	2XL
Width	45	51	56	61	66
Length	71	73	76	78	81

*MEASUREMENTS ARE PRESENTED IN CM



GILDAN®
Ultra Cotton®



96,231 likes

ultracotton_2400 Polished Simplicity | Find the key items for you, ultra comfortable yet stylish essentials. 😊 When the workday ends, your clothes must follow your mood. ❤️❤️❤️ #GildanTops #TheCasualElegance

UltraCotton

2200
Adult Tank Top

6.0 oz./yd² 203 g/m² 



*C = % Cotton, P = % Polyester



32 C
Navy

295 H
RS Sport Grey
*(90C/10P)

36 C
Black

- Preshrunk jersey knit
- Fiber content varies by color
- Banded neck and armholes
- Double-needle bottom hem
- Quarter-turned to eliminate center crease
- Tear away label
- Classic Fit

• Sizes : S - XL

RRP : 29.90 MYR / 11.90 SGD

Size	S	M	L	XL
Width	45	51	56	61
Length	71	73	76	78

*MEASUREMENTS ARE PRESENTED IN CM

스타일

Sleeveless top.
Summer & Attitude



Let's jump into the getaway mood.



This is the start of a
Dreamy Adventure

OEKO-TEX®
 CONFIDENCE IN TEXTILES
STANDARD 100
 68255 OeTI
 Tested for harmful substances
 www.oeko-tex.com/standard100



Style Hack.

When fabulousness meet sustainability.

GILDAN®
 Heavy Cotton



5000
 Adult T-Shirt

5.3 oz/yd² 180 g/m² 

- 50% Cotton 50% Polyester
- Preshrunk jersey knit
- Classic Fit
- Fiber content varies by color
- Seamless double-needle 2cm collar
- Quarter-turned to eliminate center crease

- Taped neck and shoulders
- Double needle sleeve and bottom hems
- Sizes : S - 2XL

RRP : 34.90 MYR / 13.90 SGD

Size	S	M	L	XL	2XL
Width	45	51	56	61	66
Length	71	73	76	78	81

*MEASUREMENTS ARE PRESENTED IN CM



286 C
Midnight



274 C
Russet



284 C
Lilac



276 C
Tweed



516 C
Graphite Heather

Send

Save



Comfort Colors

TODAY'S PICK UP | 魅力や着こなし例をご紹介します, 【“好きな服”より“必要な服”】
 360° パーフェクト♡ 華やかでシックに春を装う, オシャレな人がみんな買ってる!

COMFORT COLORS®



1717

Adult T-Shirt

6.1 oz/yd² 210 g/m²

- 100% ring spun cotton
- Soft Washed Garment Dyed Fabric
- Double needle collar
- Double needle armhole, sleeve and bottom hems
- Twill taped neck and shoulders

- Twill label • Joker label
- Sizes : S - XL

RRP : 72.90 MYR / 28.90 SGD

Size	S	M	L	XL
Width	47	52	57	62
Length	68	72	76	80

*MEASUREMENTS ARE PRESENTED IN CM





Fine Jersey

We set the standard for the modern t-shirt.

2001W

Fine Jersey Crewneck T-Shirt

4.3 oz/yd² 146 g/m²

- 100% combed ringspun cotton
- Incredibly soft • Medium-weight fabric
- Classic Fit
- 2cm seamed collar
- Shoulder-to-shoulder taping
- 1" double-needle sleeve and bottom hems
- Double-satin razor label
- Sizes : S - XL

RRP : 69.90 MYR / 27.90 SGD

Size	S	M	L	XL
Width	45	51	56	61
Length	73	75	78	80

*MEASUREMENTS ARE PRESENTED IN CM



Z 00 White

Z 36 Black

Z 30 Grass

ANVIL®



980

Adult Lightweight Tee

4.5 oz/yd² 150 g/m² 

- Preshrunk jersey knit
- Tubular construction
- Fabric 30/1 • Semi-Fitted
- High stitch density for smoother printing surface
- Shoulder-to-shoulder taping and seamed collar
- Twin-needle sleeve and bottom hems

- Fiber content varies by color
- Oeko-Tex® Standard 100 Certified
- Sizes : S - XL

RRP : 39.90 MYR / 16.90 SGD

Size	S	M	L	XL
Width	45	51	56	60
Length	68	71	73	78

*MEASUREMENTS ARE PRESENTED IN CM



ANV 234 Heather Red *(35C/65P)

ANV 321 Heather Blue *(35C/65P)

ANV 334 Heather Dark Grey *(35C/65P)

ANV 036 Black *(100C)



382,927 likes

anvil_939 Because everybody needs a bit of pop power in their wardrobe. 🤘 Saturday street style. @camouflagetee #everydayicon #fashionshines #chic #alwaysonpoint #streetstyleoutfitinspiration

939

Adult Midweight Camouflage Tee

4.9 oz/yd² 170 g/m²

- Preshrunk jersey knit
- 100% Cotton, Ring Spun
- Fabric 26/1
- Shoulder-to-shoulder tape and seamed collar
- Twin-needle neck, sleeve and bottom hem
- Oeko-Tex® Standard 100 Certified

- Classic Fit
- Side seam construction
- Sizes : S - 2XL

RRP : 39.90 MYR / 16.90 SGD

Size	S	M	L	XL	2XL
Width	45	51	56	60	66
Length	71	73	76	78	81

*MEASUREMENTS ARE PRESENTED IN CM



ANV 9391
Camouflage Green



ANV 9392
Camouflage Sand

ANVIL®



Send

Save



Anvil 987

STYLE SPOTLIGHT | 今季も続々と人気アイテムが登場しています。そこで今回は、今注目のアイテムを使ったおしゃれなコーディネートをご紹介します。流行より「好き」重視で本命買い！

ANVIL®
Lightweight



987 Long Sleeve Hooded Tee

4.5 oz/yd² 150 g/m² TAA AWAVE

- Preshrunk jersey knit
- 100% Cotton, Combed Ring Spun
- Fabric 30/1 • Semi-Fitted
- Display tape
- Tubular construction
- Relaxed unlined hood with contrast drawcord

- Oeko-Tex® Standard 100 Certified
- Twin-needle neck, sleeve and bottom hem
- High stitch density for smoother printing surface
- Sizes : S - XL

RRP : 39.90 MYR / 16.90 SGD

Size	S	M	L	XL
Width	45	51	56	61
Length	70	73	76	78

*MEASUREMENTS ARE PRESENTED IN CM



ANV 308
Caribbean Blue



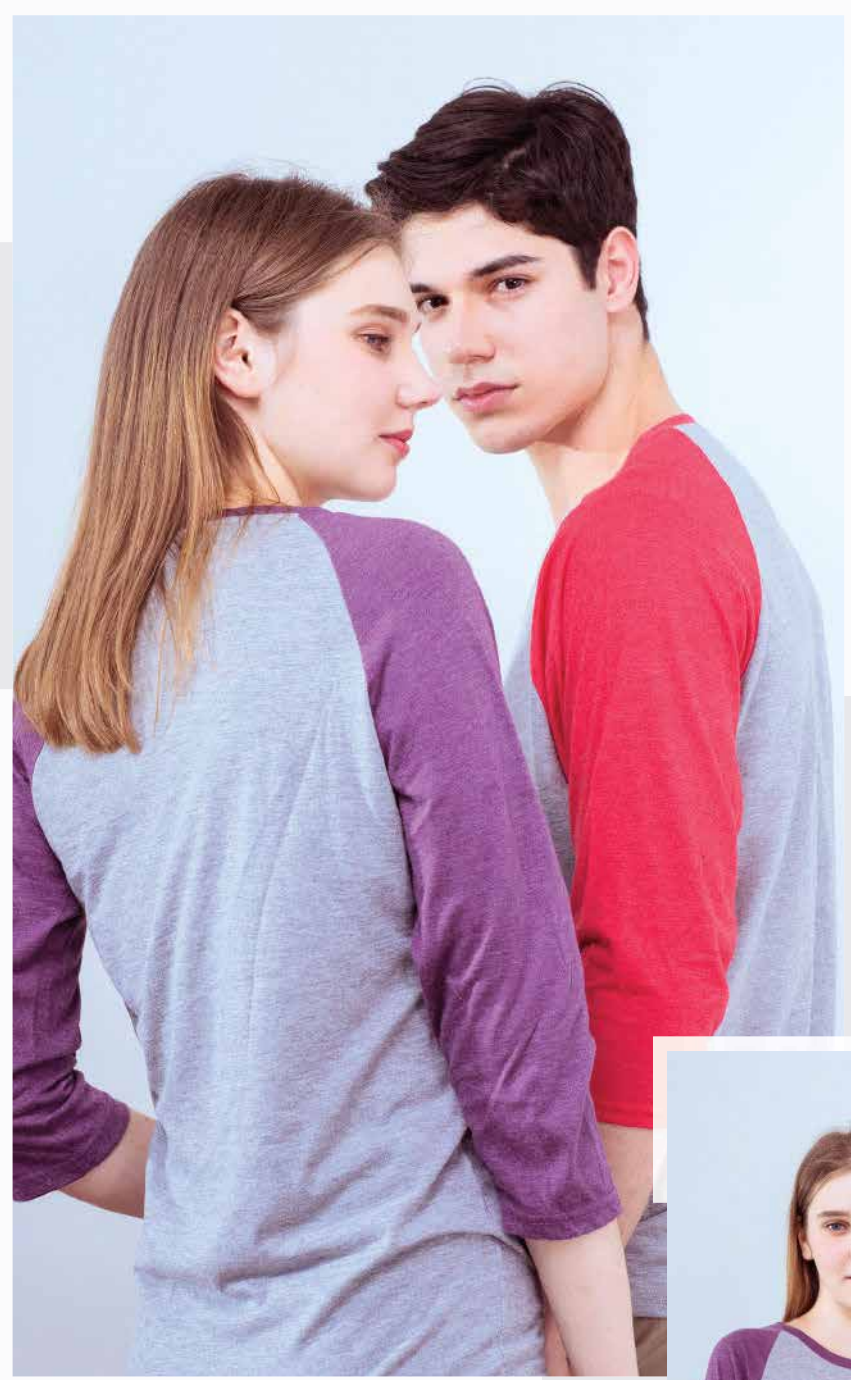
ANV 032
Navy



ANV 334
Heather Dark Grey
(35C/65P)



ANV 036
Black



Raglan Tee.

A LIFE + STYLE
Inspiration by ANVIL

ANVIL®
Tri-blend



6755

3/4 Sleeve Raglan Tee

4.7 oz/yd² 160 g/m² 

- 50% polyester / 25% combed ring spun cotton / 25% rayon
- Fabric 30/1
- Preshrunk jersey knit
- Single-needle topstitched back neck
- Double-needle sleeve and bottom hems
- Side seam construction

- Oeko-Tex® Standard 100 Certified
- High stitch density for smoother printing surface
- Contrast colour set-in collar and 3/4 raglan sleeve
- Sizes : XS - XL

RRP : 39.90 MYR / 16.90 SGD

Size	XS	S	M	L	XL
Width	40	45	51	56	60
Length	66	68	71	73	76

*MEASUREMENTS ARE PRESENTED IN CM



G1 346
Heather Aubergine



GJ 346
Heather Blue



GK 346
Heather Red



GM 346
Heather Dark Green



FZ 346
Heather Dark Grey



ADD POCKETS !

Sometimes, you just need a little extra space to carry something that your pants' pockets just can't fit. That's where the service comes in. With either short sleeve or long sleeve varieties, you can get your own custom pocketed tee for a friend, family, corporate function, or just yourself !

THE POLOS



Equal parts of professional and casual. Gildan and North Harbour are designed to be just as comfortable for modern lifestyle. Polo shirt bridges the gap between smart and casual perfectly.



NORTH HARBOUR



NHB 2400 Soft-touch Polo

- 60% Cotton 40% Polyester Lacoste
- Ribbed Polo collar
- Three-button placket
- Short sleeves with ribbed armbands
- Double-needle bottom hem
- Laser Engraved Buttons

- Fiber content varies by color
- Classic Fit
- Woven Label
- Superior Retail Fit : XS - 3XL

RRP : 49.90 MYR / 19.90 SGD

Size	XS	S	M	L	XL	2XL	3XL
Width	46	48	51	53	56	58	61
Length	66	68	71	73	76	79	81

*MEASUREMENTS ARE PRESENTED IN CM



N=New color to this style



108,665 likes

northharbour New Now | The latest fashion updates. 🤩 #unisexpoloshirts #newcolors #simplefashion #NHB2400

Send Save

New now! The latest fashion updates.



North Harbour

LONG SLEEVE POLO | 平日も休日にも使える優秀アイテム♡っぽく上品。素材も高見えできちんと感があるから、この春も通勤シーンまでばっちりカバーしてくれます。



NEW NHB 24400
Long Sleeve Soft-touch Polo



NHB 24414 Maroon NHB 24413 Red NHB 24407 Forest Green



NHB 24405 Navy NHB 24402 White NHB 24418 Sport Grey NHB 24401 Black

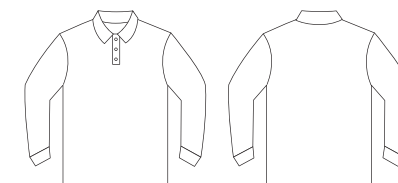
NORTH HARBOUR

- 60% Cotton 40% Polyester Lacoste
- Ribbed Polo collar
- Three-button placket
- Long sleeves with ribbed cuffs
- Double-needle bottom hem
- Laser Engraved Buttons
- Fiber content varies by color
- Classic Fit • Woven Label
- Superior Retail Fit : XS - 3XL

RRP : 49.90 MYR / 19.90 SGD
Customized orders are accepted with MOQ 50pcs & above.

Size	XS	S	M	L	XL	2XL	3XL
Width	46	48	51	53	56	58	61
Length	66	68	71	73	76	79	81

*MEASUREMENTS ARE PRESENTED IN CM



Designed for active wear, a polo shirt that's super comfortable, in 100% cotton

NEW

6800 

Adult Cotton Double Pique
Sport Shirt

6.5 **220** 
oz/yd² g/m²

- 100% cotton
- Sideseamed with side vents
- Contoured welt collar and cuffs
- Rolled forward topstitched shoulder
- Clean finished placket with reinforced bottom box
- 3 color-matched buttons
- Double needle bottom hem
- XS - 2XL
- 10 colors

RRP : 34.90 MYR / 13.90 SGD



26C
Sapphire

Height*	XS	S	M	L	XL	2XL
	160cm	165cm	170cm	175cm	180cm	185cm
Width	43	46	49	52	55	59
Length	62	65	68	71	75	79

*"Height" is a rough guideline value.



Stylishly topstitched shoulder seam. Collar is rib knit for elasticity. Placket bottom box is reinforced.



Double vents and double needle stitching at hem for better shape retention.



6800
Sapphire

95800
Daisy

NEW

95800 

Adult CVC Double Pique
Sport Shirt

6.0 **200** 
oz/yd² g/m²

- 65% ring spun cotton / 35% polyester pre-shrunk double pique knit
- Sideseamed
- Contoured welt collar and cuffs
- Rolled forward topstitched shoulder
- 2 color-matched buttons
- Double needle bottom hem
- XS - 2XL
- 10 colors

RRP : 32.90 MYR / 12.90 SGD



98C
Daisy

Height*	XS	S	M	L	XL	2XL
	160cm	165cm	170cm	175cm	180cm	185cm
Width	43	46	49	52	55	59
Length	62	65	68	71	75	79

*"Height" is a rough guideline value.





NHB 2100 GEORGIA POLO



NORTH HARBOUR

- 65% Cotton 35% Polyester Lacoste
- Ribbed Polo collar
- Pearlized buttons
- Short sleeves with ribbed armbands
- Double-needle bottom hem
- Bold diagonal panel design
- Woven Label
- Superior Retail Fit :
 - Men fitting from S to 3XL
 - Ladies fitting from S to XL (While stocks last)

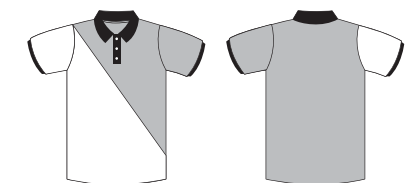
RRP : 49.90 MYR / 19.90 SGD
 Customized orders are accepted with MOQ 50pcs & above.

Size	XS	S	M	L	XL	2XL	3XL
Width	46	48	51	53	56	58	61
Length	66	68	71	73	76	79	81

*MEASUREMENTS ARE PRESENTED IN CM

Size	LS	LM	LL	LXL
Width	40	43	45	48
Length	53	55	58	60

*MEASUREMENTS ARE PRESENTED IN CM



NHB 2100 Georgia Polo



NHB 2101
Gold / Navy



NHB 2102
Red / White



NHB 2103
Charcoal / Royal



NHB 2104
Navy / White



NHB 2200

YORK POLO



Oriental Style.



NORTH HARBOUR

- 65% Cotton 35% Polyester Lacoste
- Sleek tipping collar design
- Pearlized buttons
- Short sleeves with ribbed armbands
- Double-needle bottom hem
- Woven Label
- Superior Retail Fit :
 - Men fitting from S to 3XL
 - Ladies fitting from S to XL (While stocks last)

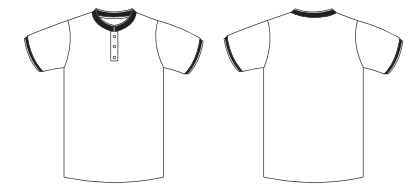
RRP : 49.90 MYR / 19.90 SGD
Customized orders are accepted with MOQ 50pcs & above.

Size	XS	S	M	L	XL	2XL	3XL
Width	46	48	51	53	56	58	61
Length	66	68	71	73	76	79	81

*MEASUREMENTS ARE PRESENTED IN CM

Size	LS	LM	LL	LXL
Width	40	43	45	48
Length	53	55	58	60

*MEASUREMENTS ARE PRESENTED IN CM



NHB 2200

York Polo



NHB 2201
Black / Gold

NHB 2202
Red / Black

NHB 2203
Navy / Red

NHB 2204
Charcoal / Royal

NHB 2205
Royal / Sapphire



NHB 2300

Murphy Polo

NORTH HARBOUR

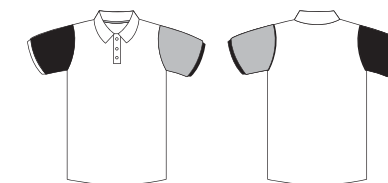
- 65% Cotton 35% Polyester Lacoste
- Ribbed Polo collar
- Pearlized buttons
- Bold color matching sleeve
- Double-needle bottom hem
- Woven Label
- Superior Retail Fit :
 - Men fitting from S to 3XL
 - Ladies fitting from S to XL (White stocks last)

Size	XS	S	M	L	XL	2XL	3XL
Width	46	48	51	53	56	58	61
Length	66	68	71	73	76	79	81

*MEASUREMENTS ARE PRESENTED IN CM

Size	LS	LM	LL	LXL
Width	40	43	45	48
Length	53	55	58	60

*MEASUREMENTS ARE PRESENTED IN CM



RRP : 49.90 MYR / 19.90 SGD
 Customized orders are accepted with MOQ 50pcs & above.



NHB 2301
White / Red / Navy

NHB 2302
Navy / White / Red

NHB 2303
Red / White / Black

NHB 2304
Royal / Charcoal / Navy

NHB 2305
Sapphire / Navy / White

NHB 2306
Navy / Forest Green / Royal

NHB 2307
Forest Green / Charcoal / Black

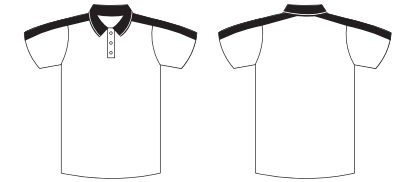


872,439 likes

northharbour Look chic on-the-go with the Murphy polos. ☀️ So versatile you can wear it for a dressier look, or pair it down with a overall for a casual sporty look. #NHB2300 #comfortandstyle #summersmile #alwaysonpoint



NHB 2500 Muller Polo



Size	XS	S	M	L	XL	2XL	3XL
Width	46	48	51	53	56	58	61
Length	66	68	71	73	76	79	81

*MEASUREMENTS ARE PRESENTED IN CM

Size	LS	LM	LL	LXL
Width	40	43	45	48
Length	53	55	58	60

*MEASUREMENTS ARE PRESENTED IN CM

NORTH HARBOUR

- 65% Cotton 35% Polyester Lacoste
- Knitted tipping collar and placket
- Pearlized buttons
- Contrast color shoulder panel
- Double-needle sleeve and bottom hems
- Woven Label
- Superior Retail Fit :
 - Men fitting from S to 3XL
 - Ladies fitting from S to XL (While stocks last)

RRP : 49.90 MYR / 19.90 SGD

Customized orders are accepted with MOQ 50pcs & above.



112,659 likes

northharbour Seeing inspiration everywhere! ❤️ Details A summer staple that will take you from beach to boardwalk with comfort and appeal, this muller polo is a must-have for any well-curated closet. 🤩 #TheSmartCasual



NHB 2501
Navy / Sapphire



NHB 2502
Royal / Navy



NHB 2503
Red / Navy



NHB 2504
Black / Daisy



NHB 2700

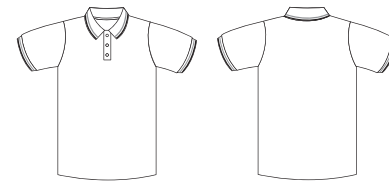
MOBILITY. COMFORT. ELEGANCE.



THE SAFFRON POLO

NHB 2700

Saffron Polo



Size	XS	S	M	L	XL	2XL	3XL
Width	46	48	51	53	56	58	61
Length	66	68	71	73	76	79	81

*MEASUREMENTS ARE PRESENTED IN CM

Size	LS	LM	LL	LXL
Width	40	43	45	48
Length	53	55	58	60

*MEASUREMENTS ARE PRESENTED IN CM



NORTH HARBOUR

- 65% Cotton 35% Polyester Lacoste
- Knitted tipping collar & cuffs
- Double-needle bottom hem
- Pearlized buttons
- Classic Fit • Woven Label
- Superior Retail Fit :
 - Men fitting from S to 3XL
 - Ladies fitting from S to XL (While stocks last)

RRP : 49.90 MYR / 19.90 SGD

Customized orders are accepted with MOQ 50pcs & above.



- NHB 2709 Maroon / White / Navy
- NHB 2702 Red / White / Black
- NHB 2707 Daisy / White / Black
- NHB 2708 Forest Green / White / Daisy
- NHB 2705 Navy / Red / White
- NHB 2704 Royal / White / Navy
- NHB 2703 Sapphire / White / Navy
- NHB 2710 Purple / White / Black
- NHB 2701 White / Red / Black
- NHB 2706 Black / White / Red

NORTH HARBOUR



NHB 2800

Glance Polo

NORTH HARBOUR

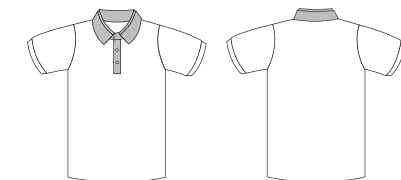
- 65% Cotton 35% Polyester Lacoste
- Double layer woven collar
- Pearlized buttons
- Short sleeves with ribbed armbands
- Double-needle bottom hem
- Woven Label
- Superior Retail Fit :
 - Men fitting from S to 3XL
 - Ladies fitting from S to XL (While stocks last)

Size	XS	S	M	L	XL	2XL	3XL
Width	46	48	51	53	56	58	61
Length	66	68	71	73	76	79	81

*MEASUREMENTS ARE PRESENTED IN CM

Size	LS	LM	LL	LXL
Width	40	43	45	48
Length	53	55	58	60

*MEASUREMENTS ARE PRESENTED IN CM



RRP : 49.90 MYR / 19.90 SGD
 Customized orders are accepted with MOQ 50pcs & above.



NHB 2801
White / Light blue



NHB 2802
Red / Charcoal



NHB 2803
Royal / Charcoal



NHB 2804
Navy / Charcoal



NHB 2805
Black / Light Blue

NHNB 2900 ADLEY POLO



NORTH HARBOUR

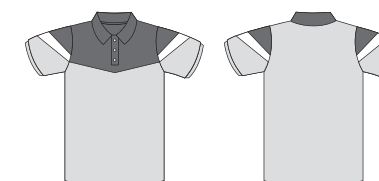
- 65% Cotton 35% Polyester Lacoste
- V shape sliding design across sleeves
- Ribbed Polo collar
- Pearlized buttons
- Three-button placket
- Short sleeves with ribbed armbands
- Double-needle bottom hem
- Woven Label
- Superior Retail Fit : XS -3XL

RRP : 59.90 MYR / 23.90 SGD

Customized orders are accepted with MOQ 50pcs & above.

Size	XS	S	M	L	XL	2XL	3XL
Width	46	48	51	53	56	58	61
Length	66	68	71	73	76	79	81

*MEASUREMENTS ARE PRESENTED IN CM



NEW NHB 2900 Adley Polo



NHB 2901
Maroon /
Charcoal / White

NHB 2902
Royal /
Charcoal / White

NHB 2903
Forest Green /
Charcoal / White

NHB 2904
Navy /
Royal / White

NHB 2905
Navy /
Forest Green / White



SPORT THIS WAY

MADE TO MOVE

20' Athletic Collection



CRP 7200 Performance Polo

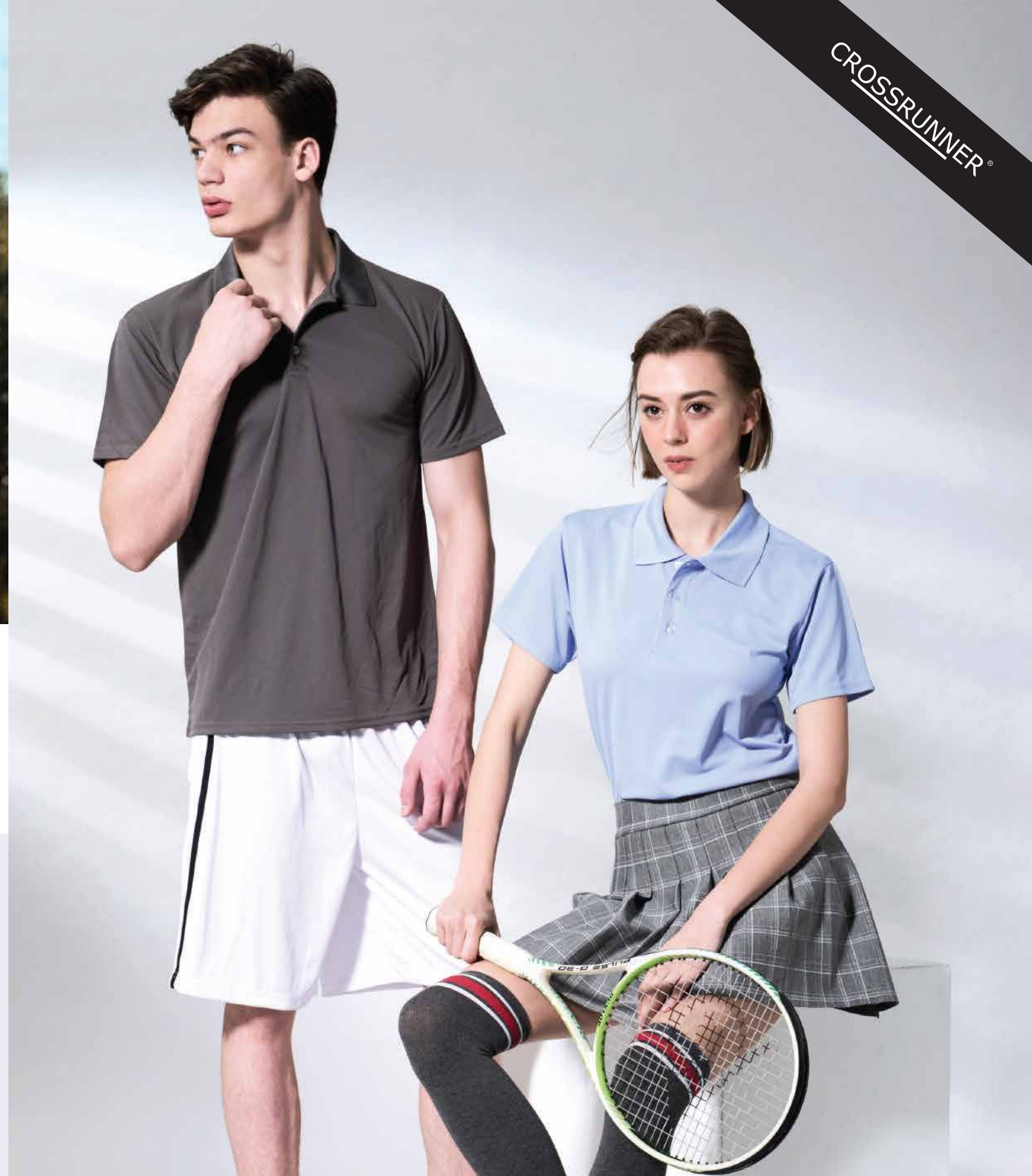
- 100% Performance Dry Pique
- Moisture-wicking performance fabric
- Antimicrobial, Anti-odor
- Greater stretch and recovery
- Polo neck, Solid-toned
- Soft feel, breathable performance

- Best for training & lifestyle
- Extra mobility & range of motion
- Quick-dry, lightweight material
- Tagless heat transfer label
- Superior Retail Fit :
- Unisex fitting from XS to 6XL

RRP : 39.90 MYR / 16.90 SGD

Size	XS	S	M	L	XL	2XL	3XL	4XL	5XL	6XL
Width	46	48	51	53	56	58	61	63	66	68
Length	66	68	71	73	76	79	81	84	86	89

*MEASUREMENTS ARE PRESENTED IN CM



N=New color to this style

Super cool moisture-wicking fabric polo shirt with inner mesh fabric

NEW

P4BI00 
Performance Adult Mesh
Sport Shirt

4.6 oz/yd² **155** g/m² 

- 100% polyester flatback mesh
- Texture on the inside
- Double needle bottom hem
- Sideseamed
- Contoured welt collar
- Rolled forward topstitched shoulder
- 2 color-matched buttons
- 3.8 cm side vents
- S - 2XL
- 5 colors

RRP : 33.90 MYR / 13.90 SGD

Height*	S	M	L	XL	2XL
	165cm	170cm	175cm	180cm	185cm
Width	47	50	53	56	59
Length	65	69	72	75	79

Height is a rough guideline value.



36C
Black



Two-button placket opens up new possibilities for stylish outfits



Side vents



P4BI00
Black



36C
Black

777C
Sport Dark Navy

765C
Sport Royal

774C
Sport Scarlet Red

30N
White



4BI00
Sport Royal

New! Gildan® "dry" shirt with moisture-wicking benefit fabric has two outstanding functions:



3BI00
3.8 oz Performance Adult Mesh T-shirt

4BI00
4.6 oz Performance Adult Mesh T-shirt

P4BI00
4.6 oz Performance Adult Mesh Sport Shirt

4BI00B
4.6 oz Performance Youth Mesh T-Shirt

188C
Safety Green

765C
Sport Royal

30N
White

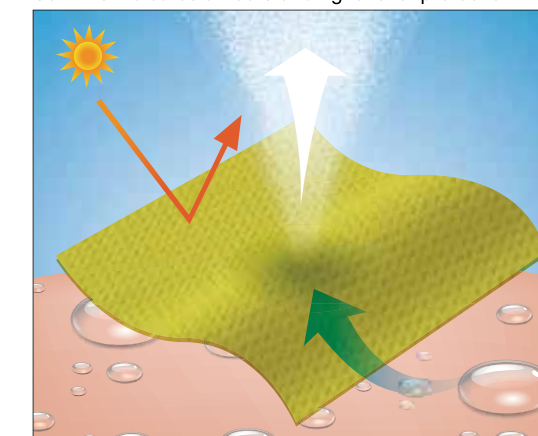
267C
Gravel

Function 1 moisture wicking

The fibers swiftly draw sweat away to the garment's outer surface, where it can evaporate. This fabric is similar to those used in global athletic clothing brands.

Function 2 ultraviolet protection

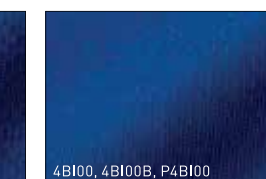
The fabric's ultraviolet protection (UPF) rating, indicating the degree of protection against UVA and UVB rays, is 30. This indicates an outstanding level of protection.



There's an outer mesh version of the fabric (used in the 3BI00), with texturing on the outside, and an inner mesh version (used in the 4BI00, 4BI00B and P4BI00), with texturing on the inside.



3BI00



4BI00, 4BI00B, P4BI00

Made of 100% polyester, this fabric also has outstanding elasticity. It provides smooth support without impeding active movement.





CRP 2100 - Infinite Polo



CRP 2101
Red / Charcoal



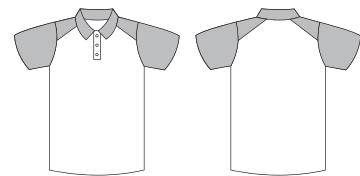
CRP 2102
Sapphire / Black



CRP 2103
White / Black



CRP 2104
Orange / Black



RRP : 49.90 MYR / 19.90 SGD
Customized orders are accepted with MOQ 50pcs & above.

Size	S	M	L	XL	2XL	3XL
Width	48	51	53	56	58	61
Length	68	71	73	76	79	81

*MEASUREMENTS ARE PRESENTED IN CM

Size	LS	LM	LL	LXL
Width	40	43	45	48
Length	53	56	58	60

*MEASUREMENTS ARE PRESENTED IN CM

- 100% Performance Dry Pique
- Contrast color shoulder panel & sleeve
- Pearlized buttons
- Antimicrobial, Anti-odor
- Quick-dry, lightweight material
- Extra mobility & range of motion
- Greater stretch and recovery
- Soft feel, breathable performance
- Moisture-wicking performance fabric
- Best for training & lifestyle
- Safin label
- Superior Retail Fit :
- Men fitting from S to 3XL
- Ladies fitting from S to XL (While stocks last)



CRP 2300 - Oxley Polo



CRP 2301
Black / Neon Green



CRP 2302
Red / Charcoal



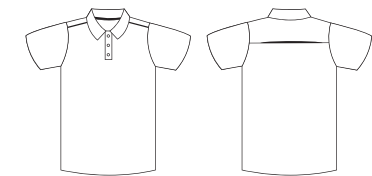
CRP 2303
White / Black



CRP 2304
Sapphire / Charcoal



CRP 2305
Royal / White



- 100% Performance Dry Pique
- Classic elegant shoulder piping
- Pearlized buttons
- Antimicrobial, Anti-odor
- Quick-dry, lightweight material
- Extra mobility & range of motion
- Greater stretch and recovery
- Soft feel, breathable performance
- Moisture-wicking performance fabric
- Best for training & lifestyle
- Safin label
- Superior Retail Fit :
- Men fitting from S to 3XL
- Ladies fitting from S to XL (While stocks last)

RRP : 49.90 MYR / 19.90 SGD
Customized orders are accepted with MOQ 50pcs & above.

Size	S	M	L	XL	2XL	3XL
Width	48	51	53	56	58	61
Length	68	71	73	76	79	81

*MEASUREMENTS ARE PRESENTED IN CM

Size	LS	LM	LL	LXL
Width	40	43	45	48
Length	53	56	58	60

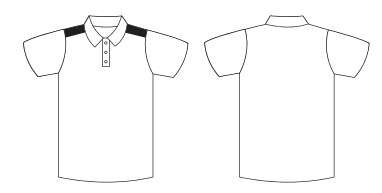
*MEASUREMENTS ARE PRESENTED IN CM



CRP 2400 - Henderson Polo



- 100% Performance Dry Pique
- Contemporary shoulder panel design
- Pearlized buttons
- Antimicrobial, Anti-odor
- Quick-dry, lightweight material
- Extra mobility & range of motion
- Greater stretch and recovery
- Soft feel, breathable performance
- Moisture-wicking performance fabric
- Best for training & lifestyle
- Satin label
- Superior Retail Fit :
- Men fitting from S to 3XL
- Ladies fitting from S to XL (While stocks last)



RRP : 49.90 MYR / 19.90 SGD
Customized orders are accepted with MOQ 50pcs & above.

Size	S	M	L	XL	2XL	3XL
Width	48	51	53	56	58	61
Length	68	71	73	76	79	81

*MEASUREMENTS ARE PRESENTED IN CM

Size	LS	LM	LL	LXL
Width	40	43	45	48
Length	53	56	58	60

*MEASUREMENTS ARE PRESENTED IN CM



CRP 2500 - Ocean Polo

- 100% Performance Dry Pique
- Classic tapping shoulder design
- Pearlized buttons
- Antimicrobial, Anti-odor
- Quick-dry, lightweight material
- Extra mobility & range of motion
- Greater stretch and recovery
- Soft feel, breathable performance
- Moisture-wicking performance fabric
- Best for training & lifestyle
- Satin label
- Superior Retail Fit :
- Men fitting from S to 3XL
- Ladies fitting from S to XL (While stocks last)

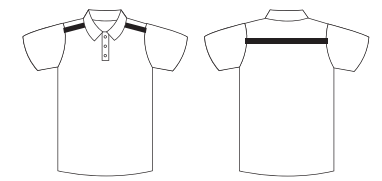
RRP : 49.90 MYR / 19.90 SGD
Customized orders are accepted with MOQ 50pcs & above.

Size	S	M	L	XL	2XL	3XL
Width	48	51	53	56	58	61
Length	68	71	73	76	79	81

*MEASUREMENTS ARE PRESENTED IN CM

Size	LS	LM	LL	LXL
Width	40	43	45	48
Length	53	56	58	60

*MEASUREMENTS ARE PRESENTED IN CM

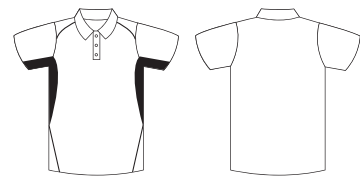




CRP 1300 - Delta Polo



- 100% Performance Dry Pique
- Contrast color waist panel & piping design
- Pearlized buttons
- Antimicrobial, Anti-odor
- Quick-dry, lightweight material
- Extra mobility & range of motion
- Greater stretch and recovery
- Soft feel, breathable performance
- Moisture-wicking performance fabric
- Best for training & lifestyle
- Safin label
- Superior Retail Fit :
- Men fitting from S to 3XL
- Ladies fitting from S to XL (While stocks last)



RRP : 49.90 MYR / 19.90 SGD
Customized orders are accepted with MOQ 50pcs & above.

Size	S	M	L	XL	2XL	3XL
Width	48	51	53	56	58	61
Length	68	71	73	76	79	81

*MEASUREMENTS ARE PRESENTED IN CM

Size	LS	LM	LL	LXL
Width	40	43	45	48
Length	53	56	58	60

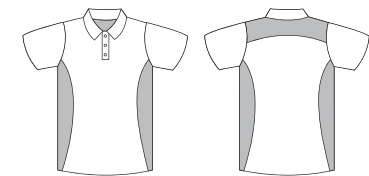
*MEASUREMENTS ARE PRESENTED IN CM



CRP 1400 - Explorer Polo



- 100% Performance Dry Pique
- Contrast color waist panel design
- Pearlized buttons
- Antimicrobial, Anti-odor
- Quick-dry, lightweight material
- Extra mobility & range of motion
- Greater stretch and recovery
- Soft feel, breathable performance
- Moisture-wicking performance fabric
- Best for training & lifestyle
- Safin label
- Superior Retail Fit :
- Men fitting from S to 3XL
- Ladies fitting from S to XL (While stocks last)



RRP : 49.90 MYR / 19.90 SGD
Customized orders are accepted with MOQ 50pcs & above.

Size	S	M	L	XL	2XL	3XL
Width	48	51	53	56	58	61
Length	68	71	73	76	79	81

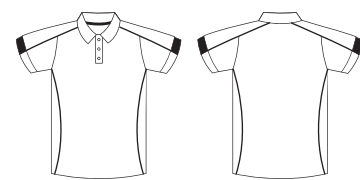
*MEASUREMENTS ARE PRESENTED IN CM

Size	LS	LM	LL	LXL
Width	40	43	45	48
Length	53	56	58	60

*MEASUREMENTS ARE PRESENTED IN CM



CRP 1500 - Finisher Polo



DESIGNER ACTIVEWEAR

- 100% Performance Dry Pique
- Contrast color piping design
- Pearlized buttons
- Antimicrobial, Anti-odor
- Quick-dry, lightweight material
- Extra mobility & range of motion
- Greater stretch and recovery
- Soft feel, breathable performance
- Moisture-wicking performance fabric
- Best for training & lifestyle
- Satin label
- Superior Retail Fit :
 - Men fitting from S to 3XL
 - Ladies fitting from S to XL (While stocks last)

RRP : 49.90 MYR / 19.90 SGD
 Customized orders are accepted with MOQ 50pcs & above.



CRP 1501
White / Navy

CRP 1502
Maroon / White

CRP 1503
Purple / White

CRP 1504
Royal / White

CRP 1505
Tiffany Blue / Charcoal

Size	S	M	L	XL	2XL	3XL
Width	48	51	53	56	58	61
Length	68	71	73	76	79	81

*MEASUREMENTS ARE PRESENTED IN CM

Size	LS	LM	LL	LXL
Width	40	43	45	48
Length	53	56	58	60

*MEASUREMENTS ARE PRESENTED IN CM

CROSSRUNNER®



CRP 1600 - Racer Polo



CRP 1601
Navy
Red / White

CRP 1602
Forest Green
Gold / White

CRP 1603
White
Neon Green / Charcoal

CRP 1604
Maroon
Heliconia / White

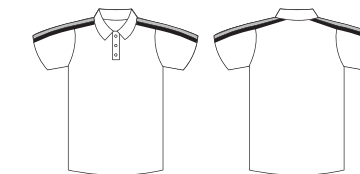
CRP 1605
Black
Daisy / Charcoal

- 100% Performance Dry Pique
- Contrast color shoulder panel design
- Pearlized buttons
- Antimicrobial, Anti-odor
- Quick-dry, lightweight material
- Extra mobility & range of motion
- Greater stretch and recovery
- Soft feel, breathable performance
- Moisture-wicking performance fabric
- Best for training & lifestyle
- Satin label
- Superior Retail Fit :
 - Men fitting from S to 3XL
 - Ladies fitting from S to XL (While stocks last)

RRP : 49.90 MYR / 19.90 SGD
 Customized orders are accepted with MOQ 50pcs & above.

Size	S	M	L	XL	2XL	3XL
Width	48	51	53	56	58	61
Length	68	71	73	76	79	81

*MEASUREMENTS ARE PRESENTED IN CM



Size	LS	LM	LL	LXL
Width	40	43	45	48
Length	53	56	58	60

*MEASUREMENTS ARE PRESENTED IN CM

IT'S TIME FOR #SPORTS

CROSSRUNNER®



NEW CRP 2900 - Paragon Polo

- 100% Performance Jacquard Pique
- Contrast piping design
- Stand collar half zip pullover
- Antimicrobial, Anti-odor
- Quick-dry, lightweight material
- Extra mobility & range of motion
- Greater stretch and recovery
- Moisture-wicking performance fabric
- Soft hand feel, breathable performance
- Best for training & lifestyle
- Satin label
- Superior Retail Fit : XS - 3XL



CRP 2901
Red / White



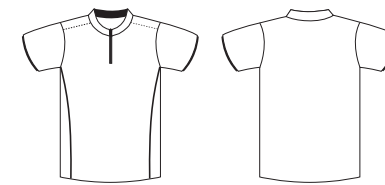
CRP 2902
Sapphire / White



CRP 2903
Navy / White



CRP 2904
Black / White



RRP : 49.90 MYR / 19.90 SGD

Customized orders are accepted with MOQ 50pcs & above.

Size	XS	S	M	L	XL	2XL	3XL
Width	46	48	51	53	56	58	61
Length	66	68	71	73	76	79	81

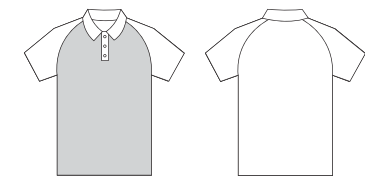
*MEASUREMENTS ARE PRESENTED IN CM

Transcending Performance with Comfort and Elegance.



CRP 2700 - Phantom Polo

- Sublimated Jersey
- Performance Interlock
- Pearlized buttons
- Raglan classic styling
- Antimicrobial, Anti-odor
- Quick-dry, lightweight material
- Extra mobility & range of motion
- Greater stretch and recovery
- Soft feel, breathable performance
- Moisture-wicking performance fabric
- Classic, comfort and iconic
- Best for training & lifestyle
- Tagless heat transfer label
- Superior Retail Fit : XS - 3XL



RRP : 49.90 MYR / 19.90 SGD

Customized orders are accepted with MOQ 50pcs & above.

Size	XS	S	M	L	XL	2XL	3XL
Width	46	48	51	53	56	58	61
Length	66	68	71	73	76	79	81

*MEASUREMENTS ARE PRESENTED IN CM



CRP 2701
White



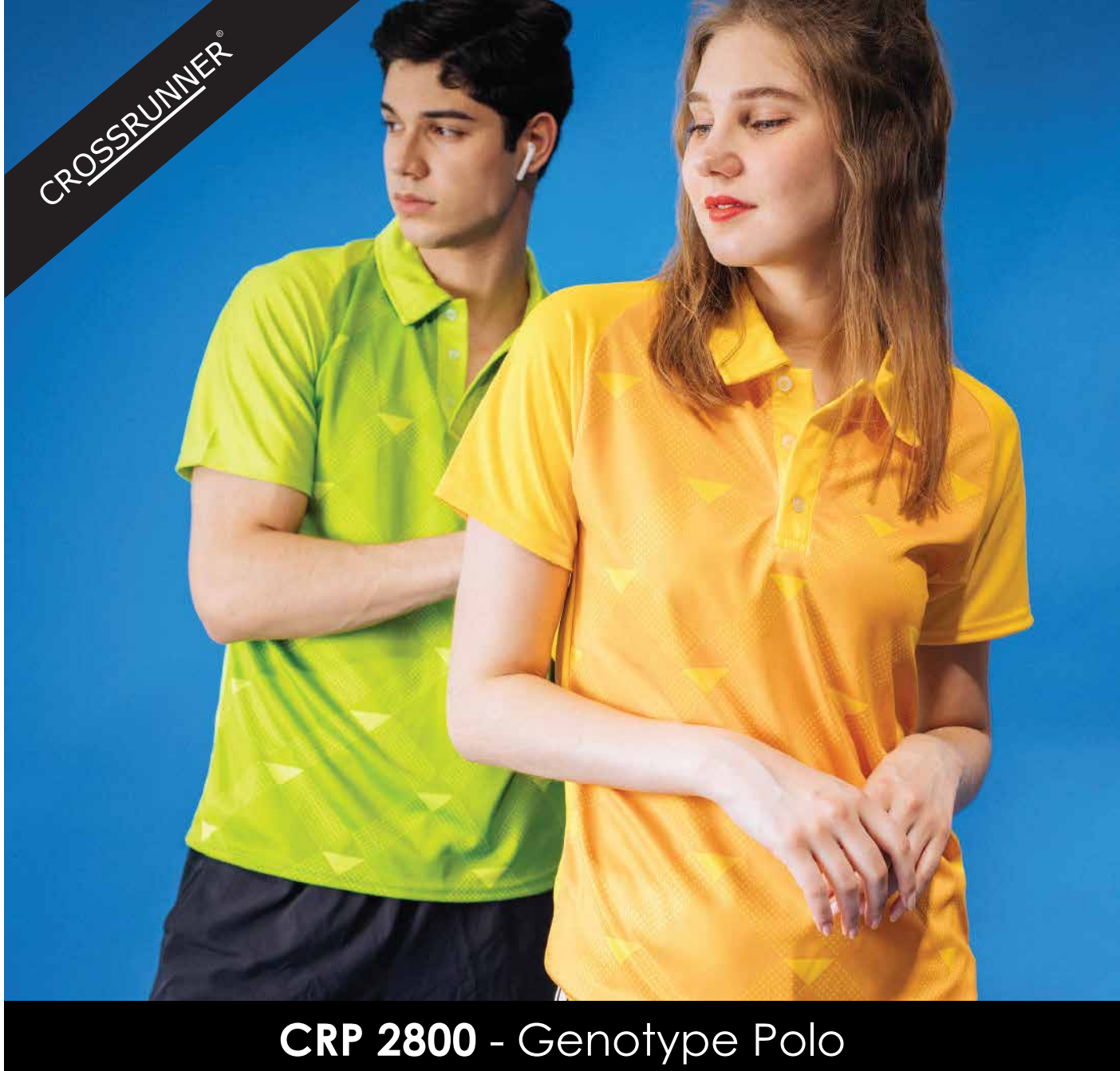
CRP 2702
Charcoal



CRP 2703
Royal

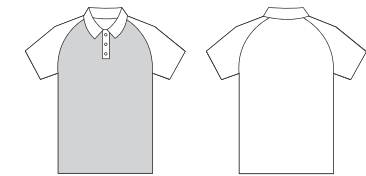


CRP 2704
Daisy



CRP 2800 - Genotype Polo

- Sublimated Jersey
- Performance Flat Knit
- Pearlized buttons
- Raglan classic styling
- Antimicrobial, Anti-odor
- Quick-dry, lightweight material
- Extra mobility & range of motion
- Greater stretch and recovery
- Soft feel, breathable performance
- Moisture-wicking performance fabric
- Classic, comfort and iconic
- Best for training & lifestyle
- Tagless heat transfer label
- Superior Retail Fit : XS - 3XL



RRP : 49.90 MYR / 19.90 SGD

Customized orders are accepted with MOQ 50pcs & above.

Size	XS	S	M	L	XL	2XL	3XL
Width	46	48	51	53	56	58	61
Length	66	68	71	73	76	79	81

*MEASUREMENTS ARE PRESENTED IN CM



CRP 2801
Light Grey



CRP 2802
Daisy



CRP 2803
Lime



CRP 2804
Royal



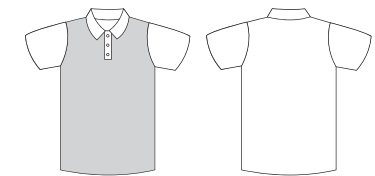
CRP 3000 # PERPLEX POLO



CROSSRUNNER®



- Sublimated Jersey
- Performance Interlock
- Pearlized buttons
- Abstract linear pattern
- Antimicrobial, Anti-odor
- Quick-dry, lightweight material
- Extra mobility & range of motion
- Greater stretch and recovery
- Soft feel, breathable performance
- Moisture-wicking performance fabric
- Classic, comfort and iconic
- Best for training & lifestyle
- Tagless heat transfer label
- Superior Retail Fit : XS - 3XL



RRP : 49.90 MYR / 19.90 SGD

Customized orders are accepted with MOQ 50pcs & above.

Size	XS	S	M	L	XL	2XL	3XL
Width	46	48	51	53	56	58	61
Length	66	68	71	73	76	79	81

*MEASUREMENTS ARE PRESENTED IN CM



NEW CRP 3000 Perplex Polo



CRP 3001 Daisy



CRP 3002 Red



CRP 3003 Grey



CRP 3004 Royal



originals
represent

CROSSRUNNER® x 2020 Collection

NEVER
BE
THE
SAME



BEING
YOUR
BETTER
SELF



CROSSRUNNER®



CRR 3600 Performance Tee

- 100% Performance Dry Pique
- Moisture-wicking performance fabric
- Antimicrobial, Anti-odor
- Greater stretch and recovery
- Soft feel, breathable performance
- Round neckline, Solid-toned tee
- Best for training & lifestyle
- Extra mobility & range of motion
- Quick-dry, lightweight material
- Tagless heat transfer label
- Superior Retail Fit :
- Unisex fitting from XS to 6XL

RRP : 29.90 MYR / 11.90 SGD

Size	XS	S	M	L	XL	2XL	3XL	4XL	5XL	6XL
Width	46	48	51	53	56	58	61	63	66	68
Length	66	68	71	73	76	79	81	84	86	89

*MEASUREMENTS ARE PRESENTED IN CM

#GEAR UP
FIND YOUR
GREATNESS.



N=New color to this style

PERFORMANCE SHIRTS

We offer a range of high performance "dry" shirts with moisture-wicking and ultraviolet protection properties. Featuring ultra comfortable fitted T-shirts and stylish polo shirts, this collection is perfect for athletes and anyone who enjoys an active lifestyle.



Lightweight, soft and comfortable outer mesh moisture-wicking fabric T-shirt



NEW

3BI00 
Performance Adult Mesh
T-Shirt

3.8 oz/yd² **130** g/m² 

- 100% polyester flatback mesh
- Textured face
- Single needle 2 cm self-fabric collar
- Taped back neck
- Double needle sleeve and bottom hems
- XS - 2XL
- 7 colors

RRP : 29.90 MYR / 11.90 SGD

Height*	XS	S	M	L	XL	2XL
	160cm	165cm	170cm	175cm	180cm	185cm
Width	44	47	50	53	56	59
Length	61	64	67	70	72	74

*Height is a rough guideline value.



188C
Safety Green



Collar made from same fabric as body



Double needle stitching at cuffs and hemline for better shape retention



Inner mesh moisture-wicking fabric T-shirt that's great for sports or everyday wear

NEW

4BI00 

Performance Adult Mesh T-Shirt

4.6 oz/yd² **155** g/m² 

- 100% polyester flatback mesh
- Texture on the inside
- Single needle 2 cm self-fabric collar
- Taped back neck
- Sideseamed
- Double needle sleeve and bottom hems
- XS - 2XL
- 7 colors

RRP : 29.90 MYR / 11.90 SGD

Height*	XS	S	M	L	XL	2XL
	160cm	165cm	170cm	175cm	180cm	185cm
Width	44	47	50	53	56	59
Length	63	66	69	72	74	76

*Height is a rough guideline value.



765C
Sport Royal



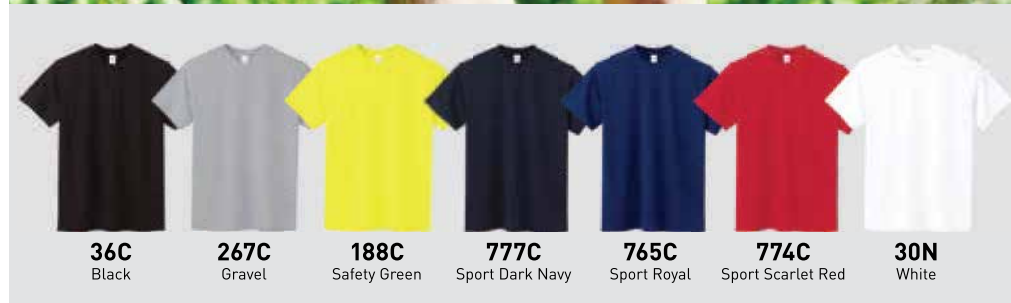
Collar made from same fabric as body



With its smooth surface, the inner mesh enhances print quality



4BI00
Sport Royal



36C Black **267C** Gravel **188C** Safety Green **777C** Sport Dark Navy **765C** Sport Royal **774C** Sport Scarlet Red **30N** White

NEW

4BI00B 

Performance Youth Mesh T-Shirt

4.6 oz/yd² **155** g/m² 

- 100% polyester flatback mesh
- Single needle 1.5 cm self-fabric collar
- Taped back neck
- Sideseamed
- Double needle sleeve and bottom hems
- YXXS - YXL
- 7 colors

RRP : 25.90 MYR / 10.90 SGD

Height*	YXXS	YXS	YS	YM	YL	YXL
	100cm	110cm	120cm	135cm	140cm	150cm
Width	31	33	36	38	41	43
Length	43	45	48	51	54	58

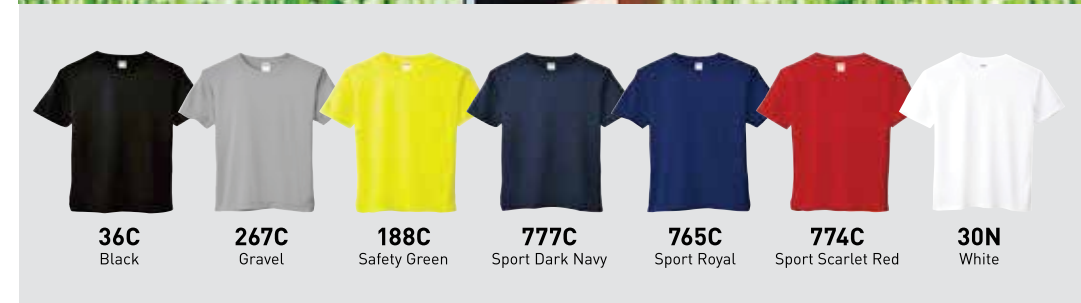
*Height is a rough guideline value.



774C
Sport Scarlet Red



4BI00B
Sport Scarlet Red



36C Black **267C** Gravel **188C** Safety Green **777C** Sport Dark Navy **765C** Sport Royal **774C** Sport Scarlet Red **30N** White

CRR 3600B
Youth Performance Tee

일상의 모든 순간을 액티브하게

Urban Playwear

CROSSRUNNER®

- 100% Performance Dry Pique
- Best for training & lifestyle
- Round neckline, Solid-toned tee
- Moisture-wicking performance fabric
- Antimicrobial, Anti-odor
- Quick-dry, lightweight material
- Greater stretch and recovery
- Soft feel, breathable performance
- Tagless heat transfer label
- Superior Retail Fit :
- Youth fitting from YM to YL

RRP : 29.90 MYR / 11.90 SGD
Customized orders are accepted with MOQ 50pcs & above.

Size	YM	YL
Width	35	38
Length	53	56

*MEASUREMENTS ARE PRESENTED IN CM



Start somewhere!



“ BRING YOUR A-GAME ”

CROSSRUNNER®

CRR 36400
Performance Long Sleeve Tee

- 100% Performance Dry Pique
- Moisture-wicking performance fabric
- Round neckline, Solid-toned tee
- Antimicrobial, Anti-odor
- Greater stretch and recovery
- Extra mobility & range of motion
- Soft feel, breathable performance
- Best for training & lifestyle
- Quick-dry, lightweight material
- Tagless heat transfer label
- Superior Retail Fit : XS - 3XL

RRP : 32.90 MYR / 13.90 SGD
Customized orders are accepted with MOQ 50pcs & above.

Size	XS	S	M	L	XL	2XL	3XL
Width	46	48	51	53	56	58	61
Length	66	68	71	73	76	79	81

*MEASUREMENTS ARE PRESENTED IN CM



N=New color to this style





CROSSRUNNER®



390,968 likes

crossrunner • You should never have to worry about the weather. That's why we built this sports tee with lightweight, quick-dry material. We've covered the details, so you just focused on running. #MyCrossrunner #softhandfeel

CRR 3900

Crossrunner Plus Performance Tee

- 100% Performance Jacquard Pique
- Round neckline, Solid-toned tee
- Soft and smooth handfeel
- Moisture-wicking performance fabric
- Antimicrobial, Anti-odor
- Greater stretch and recovery
- Extra mobility & range of motion
- breathable performance
- Best for training & lifestyle
- Quick-dry, lightweight material
- Double-needle sleeve and bottom hems

- Fiber content varies by color
- Tagless heat transfer label
- Superior Retail Fit : XS - 3XL

RRP : 39.90 MYR / 16.90 SGD

Customized orders are accepted with MOQ 50pcs & above.

Size	XS	S	M	L	XL	2XL	3XL
Width	46	48	51	53	56	58	61
Length	66	68	71	73	76	79	81

*MEASUREMENTS ARE PRESENTED IN CM



Super soft.

Send

Save



◆ Crossrunner

TODAY'S WORKOUT | 【軽くて、気持ちよくて、動きやすい。】だから、スポーツでも、日常でも、毎日着ていたい。高機能素材の驚くべきチカラで、あなたの心と体は、どこまでも自由になれる。

CROSSRUNNER®

CRR 9600

Crossrunner Plus Intense Tee

- 100% Performance Heather Blend
- Soft and smooth handfeel
- Moisture-wicking performance fabric
- Antimicrobial, Anti-odor
- Greater stretch and recovery
- Extra mobility & range of motion
- breathable performance
- Best for training & lifestyle
- Double-needle sleeve and bottom hems
- Fiber content varies by color
- Tagless heat transfer label
- Superior Retail Fit : XS - 3XL

RRP : 39.90 MYR / 16.90 SGD

Customized orders are accepted with MOQ 50pcs & above.

Size	XS	S	M	L	XL	2XL	3XL
Width	46	48	51	53	56	58	61
Length	66	68	71	73	76	79	81

*MEASUREMENTS ARE PRESENTED IN CM



CRR 9601
Dark Heather



CRR 9602
Heather Cardinal



CRR 9603
Heather Royal



CRR 9604
Heather Sapphire



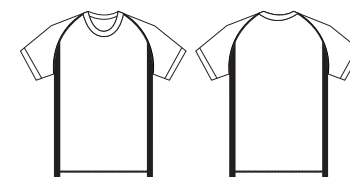
IT'S TIME FOR #FITNESS

CROSSRUNNER®



CRR 1100 - Storm Tee

- 100% Performance Dry Pique
- Contrast color panel & stitching
- Antimicrobial, Anti-odor
- Quick-dry, lightweight material
- Extra mobility & range of motion
- Greater stretch and recovery
- Moisture-wicking performance fabric
- Best for training & lifestyle
- Tagless heat transfer label
- Superior Retail Fit :
 - Men fitting from S to 3XL
 - Ladies fitting from S to XL (While stocks last)



CRR 1101
Black / White

CRR 1102
Neon Green / Black

CRR 1103
Navy / Red

CRR 1104
Charcoal / Orange

RRP : 39.90 MYR / 16.90 SGD

Customized orders are accepted with MOQ 50pcs & above.

Size	S	M	L	XL	2XL	3XL
Width	48	51	53	56	58	61
Length	68	71	73	76	79	81

*MEASUREMENTS ARE PRESENTED IN CM

Size	LS	LM	LL	LXL
Width	40	43	45	48
Length	53	56	58	60

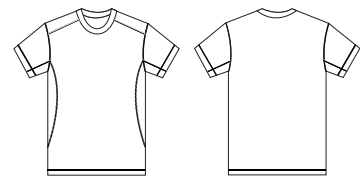
*MEASUREMENTS ARE PRESENTED IN CM



CRR 1200 - Velocity Polo



- 100% Performance Dry Pique
- Contrast color stitching design
- Antimicrobial, Anti-odor
- Quick-dry, lightweight material
- Extra mobility & range of motion
- Greater stretch and recovery
- Soft feel, breathable performance
- Moisture-wicking performance fabric
- Classic, comfort and iconic
- Best for training & lifestyle
- Tagless heat transfer label
- Superior Retail Fit :
 - Men fitting from S to 3XL
 - Ladies fitting from S to XL (While stocks last)



RRP : 39.90 MYR / 16.90 SGD
 Customized orders are accepted with MOQ 50pcs & above.

Size	S	M	L	XL	2XL	3XL
Width	48	51	53	56	58	61
Length	68	71	73	76	79	81

*MEASUREMENTS ARE PRESENTED IN CM

Size	LS	LM	LL	LXL
Width	40	43	45	48
Length	53	56	58	60

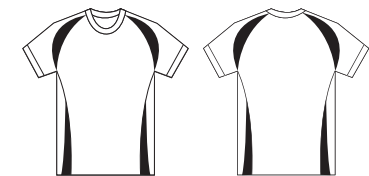
*MEASUREMENTS ARE PRESENTED IN CM



CRR 1300 - Zen Tee



- 100% Performance Dry Pique
- Contrast color panel design
- Antimicrobial, Anti-odor
- Quick-dry, lightweight material
- Extra mobility & range of motion
- Greater stretch and recovery
- Soft feel, breathable performance
- Moisture-wicking performance fabric
- Classic, comfort and iconic
- Best for training & lifestyle
- Tagless heat transfer label
- Superior Retail Fit :
 - Men fitting from S to 3XL
 - Ladies fitting from S to XL (While stocks last)



RRP : 39.90 MYR / 16.90 SGD
 Customized orders are accepted with MOQ 50pcs & above.

Size	S	M	L	XL	2XL	3XL
Width	48	51	53	56	58	61
Length	68	71	73	76	79	81

*MEASUREMENTS ARE PRESENTED IN CM

Size	LS	LM	LL	LXL
Width	40	43	45	48
Length	53	56	58	60

*MEASUREMENTS ARE PRESENTED IN CM



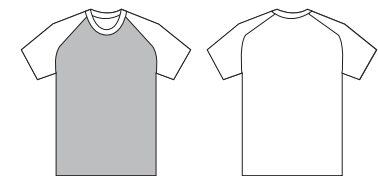
CRR 1800 # DENSE TEE



CROSSRUNNER®

CRR 1800 - Dense Tee

- Sublimated Jersey
- Performance Reverse Eyelet
- Raglan classic styling
- Urban camouflage pattern
- Antimicrobial, Anti-odor
- Quick-dry, lightweight material
- Extra mobility & range of motion
- Greater stretch and recovery
- Soft feel, breathable performance
- Moisture-wicking performance fabric
- Classic, comfort and iconic
- Best for training & lifestyle
- Tagless heat transfer label
- Superior Retail Fit : XS - 3XL



RRP : 39.90 MYR / 16.90 SGD

Customized orders are accepted with MOQ 50pcs & above.

Size	XS	S	M	L	XL	2XL	3XL
Width	46	48	51	53	56	58	61
Length	66	68	71	73	76	79	81

*MEASUREMENTS ARE PRESENTED IN CM



CRR 1801
Light Grey



CRR 1802
Milo Green



CRR 1803
Daisy



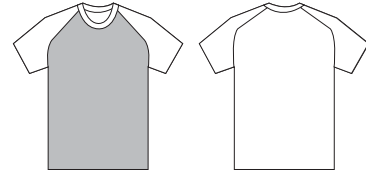
CRR 1804
Light Blue



CRR 1805
Charcoal

CRR 1900 - Trimosaic Tee

- Sublimated Jersey
- Performance Interlock
- Raglan classic styling
- Urban geometric mosaic pattern
- Antimicrobial, Anti-odor
- Quick-dry, lightweight material
- Extra mobility & range of motion
- Greater stretch and recovery
- Soft feel, breathable performance
- Moisture-wicking performance fabric
- Classic, comfort and iconic
- Best for training & lifestyle
- Tagless heat transfer label
- Superior Retail Fit : XS - 3XL



RRP : 39.90 MYR / 16.90 SGD
 Customized orders are accepted with MOQ 50pcs & above.

Size	XS	S	M	L	XL	2XL	3XL
Width	46	48	51	53	56	58	61
Length	66	68	71	73	76	79	81

*MEASUREMENTS ARE PRESENTED IN CM



CRR 1901
Milo Green



CRR 1902
Daisy



CRR 1903
Sapphire



CRR 1904
Heliconia



CROSSRUNNER®



159,377 likes

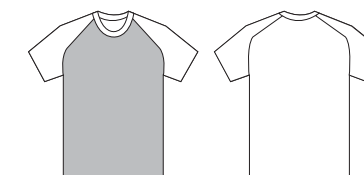
crossrunner • Breathable & versatile gear that allows you to focus on your training. That's why we built this sports tee with lightweight, quick-dry material. #dressedtobeseen #softhandfeel #supercomfort





CRR 2000 - Foxcharm Tee

- Sublimated Jersey
- Performance Interlock
- Raglan classic styling
- Modern abstract chevron pattern
- Antimicrobial, Anti-odor
- Quick-dry, lightweight material
- Extra mobility & range of motion
- Greater stretch and recovery
- Soft feel, breathable performance
- Moisture-wicking performance fabric
- Classic, comfort and iconic
- Best for training & lifestyle
- Tagless heat transfer label
- Superior Retail Fit : XS - 3XL



RRP : 39.90 MYR / 16.90 SGD

Customized orders are accepted with MOQ 50pcs & above.

Size	XS	S	M	L	XL	2XL	3XL
Width	46	48	51	53	56	58	61
Length	66	68	71	73	76	79	81

*MEASUREMENTS ARE PRESENTED IN CM



CRR 2001
Daisy



CRR 2002
Royal



CRR 2003
Purple



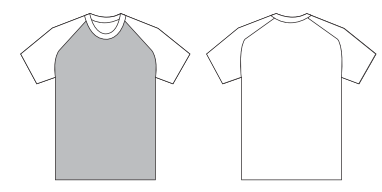
CRR 2004
Sapphire

CROSSRUNNER®



CRR 2100 - Matrix Tee

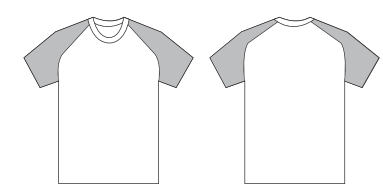
- Sublimated Jersey
- Performance Interlock
- Raglan classic styling
- Minimal triangles modern pattern
- Antimicrobial, Anti-odor
- Quick-dry, lightweight material
- Extra mobility & range of motion
- Greater stretch and recovery
- Soft feel, breathable performance
- Moisture-wicking performance fabric
- Classic, comfort and iconic
- Best for training & lifestyle
- Tagless heat transfer label
- Superior Retail Fit : XS - 3XL



RRP : 39.90 MYR / 16.90 SGD
 Customized orders are accepted with MOQ 50pcs & above.

Size	XS	S	M	L	XL	2XL	3XL
Width	46	48	51	53	56	58	61
Length	66	68	71	73	76	79	81

*MEASUREMENTS ARE PRESENTED IN CM



SHOW OFF EVERY MOVE

- Sublimated Jersey
- Sleeve - 100% Performance Jacquard Pique
- Body - 100% Performance Dry Pique
- Raglan classic styling
- Antimicrobial, Anti-odor
- Quick-dry, lightweight material
- Extra mobility & range of motion
- Greater stretch and recovery
- Soft feel, breathable performance
- Moisture-wicking performance fabric
- Best for training & lifestyle
- Tagless heat transfer label
- Superior Retail Fit : XS - 3XL

RRP : 39.90 MYR / 16.90 SGD
 Customized orders are accepted with MOQ 50pcs & above.



CRR 2200 - Adorn Tee



CRR 2201
Navy

CRR 2202
Royal



CRR 2203
Maroon

CRR 2204
Forest Green

Size	XS	S	M	L	XL	2XL	3XL
Width	46	48	51	53	56	58	61
Length	66	68	71	73	76	79	81

*MEASUREMENTS ARE PRESENTED IN CM



CRR 2300 # SPLENDID TEE



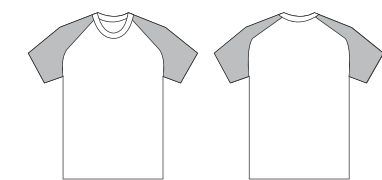
Get the energy to live your every day audaciously



CROSSRUNNER®



- Sublimated Jersey
- Performance Interlock
- Rhythm diagonal stripes design
- Raglan classic styling
- Antimicrobial, Anti-odor
- Quick-dry, lightweight material
- Extra mobility & range of motion
- Greater stretch and recovery
- Soft feel, breathable performance
- Moisture-wicking performance fabric
- Classic, comfort and iconic
- Best for training & lifestyle
- Tagless heat transfer label
- Superior Retail Fit : XS - 3XL



RRP : 39.90 MYR / 16.90 SGD
Customized orders are accepted with MOQ 50pcs & above.

Size	XS	S	M	L	XL	2XL	3XL
Width	46	48	51	53	56	58	61
Length	66	68	71	73	76	79	81

*MEASUREMENTS ARE PRESENTED IN CM



NEW CRR 2300
Splendid Tee





CROSSRUNNER®



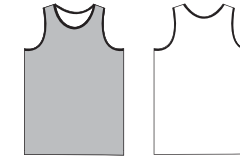
CRV 1300 NEW
Seize Running Vest

- Sublimated Jersey
- Performance Reverse Eyelet
- Athletic ringer design
- Antimicrobial, Anti-odor
- Quick-dry, lightweight material
- Best for training & lifestyle
- Greater stretch and recovery
- Soft feel, breathable performance
- Moisture-wicking performance fabric
- Classic, comfort and iconic
- Tagless heat transfer label
- Superior Retail Fit : XS - 3XL

RRP : 35.90 MYR / 19.90 SGD

Customized orders are accepted with MOQ 50pcs & above.

Size	S	M	L	XL	2XL	3XL
Width	48	51	53	56	58	61
Length	68	71	73	76	79	81



CRV 1301
Lt. Grey / Turq Blue



CRV 1302
Red / Lt. Blue



CRV 1303
Milo Green / Black



CRV 1304
Royal / Daisy



Trendy Sport.



Liked by [jiajie_nd](#) and 31,852 others

[crossrunner](#) Soft and breathable mesh fabric to bring a fresh look to this relaxed tank top from crossrunner. 😁

#Fromthegymltothestreets #MyCrossrunner #stylishlook #activecomfort #UnisexSummerTops #readytomove... more

View all 291 Comments

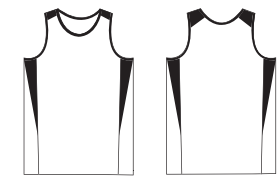


CRV 1600 # FLEX RUNNING VEST



CROSSRUNNER®

- 100% Performance Dry Pique
- Running vest styling
- Contrast color panel design
- Antimicrobial, Anti-odor
- Quick-dry, lightweight material
- Extra mobility & range of motion
- Soft feel, breathable performance
- Moisture-wicking performance fabric
- Classic, comfort and iconic
- Best for training & lifestyle
- Tagless heat transfer label
- Superior Retail Fit :
 - Men fitting from S to 3XL
 - Ladies fitting from S to XL (While stocks last)



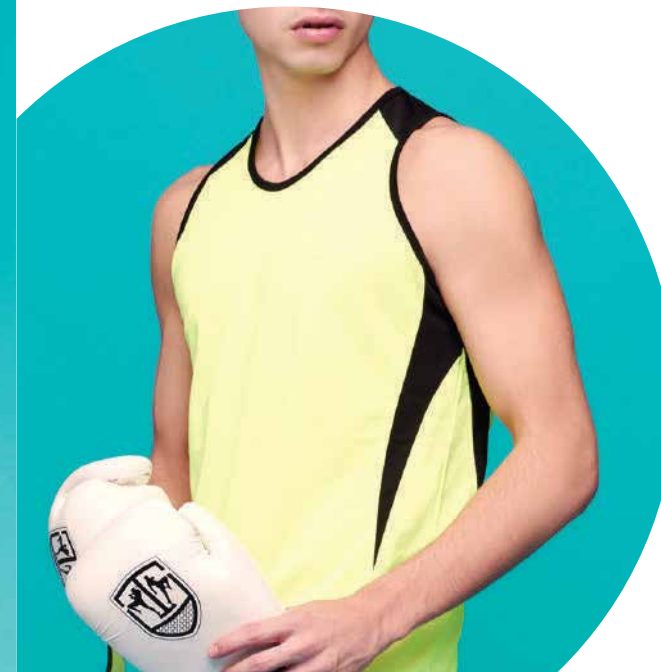
RRP : 35.90 MYR / 14.90 SGD
Customized orders are accepted with MOQ 50pcs & above.

Size	S	M	L	XL	2XL	3XL
Width	48	51	53	56	58	61
Length	68	71	73	76	79	81

Size	LS	LM	LL	LXL
Width	40	43	45	48
Length	53	56	58	60

*MEASUREMENTS ARE PRESENTED IN CM

*MEASUREMENTS ARE PRESENTED IN CM



CRV 1600 Flex Running Vest



CRV 1601
N. Orange / Charcoal

CRV 1602
White / Black

CRV 1603
Red / Black

CRV 1604
N. Green / Black

CRV 1605
Royal / Black



CRT 1100 J - Zeal Track Jacket



CRT 1101
Light Grey



CRT 1102
Daisy

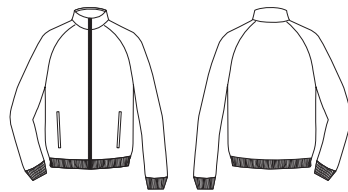


CRT 1103
Red



CRT 1104
Navy

- Performance Flat Knit
- Raglan classic styling
- Zip up fastening
- Stand collar
- Slanted welt pockets
- Rib hem and cuffs
- Antimicrobial, Anti-odor
- Quick-dry, lightweight material
- Soft feel, breathable performance
- Moisture-wicking performance fabric
- Classic, comfort and iconic
- Best for training & lifestyle
- Satin Label
- Superior Retail Fit : XS - 2XL



RRP : 69.90 MYR / 27.90 SGD

Customized orders are accepted with MOQ 50pcs & above.

Size	XS	S	M	L	XL	2XL
Width	48	51	53	56	58	60
Length	62	64	67	70	72	75

*MEASUREMENTS ARE PRESENTED IN CM



CRT 1200 J - Neil Track Jacket



CRT 1201
Maroon
Navy / White



CRT 1202
Forest Green
Light Grey / White



CRT 1203
Navy
Black / White



CRT 1204
Black
Red / White

- Performance Eyelet
- Zip up fastening
- Stand collar
- Contrast color panel & piping
- Rib hem and cuffs
- Slanted welt pockets
- Quick-dry, lightweight material
- Greater stretch and recovery
- Soft feel, breathable performance
- Moisture-wicking performance fabric
- Classic, comfort and iconic
- Best for training & lifestyle
- Satin Label
- Superior Retail Fit : XS - 2XL



RRP : 69.90 MYR / 27.90 SGD

Customized orders are accepted with MOQ 50pcs & above.

Size	XS	S	M	L	XL	2XL
Width	48	51	53	56	58	60
Length	62	64	67	70	72	75

*MEASUREMENTS ARE PRESENTED IN CM

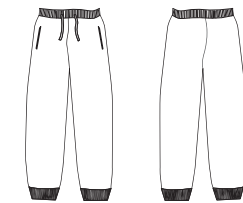


CRT 1101 P # ZEAL ACTIVE TRACKPANTS



CRT 1101 P - Zeal Active Trackpants

- Performance Flat Knit
- Unisex design
- Best for performance
- Elastic waistband
- Functional drawcord waistband
- Welt side pockets
- Elasticised ankle cuffs
- Straight / wide leg cut
- Relaxed fit
- Quick-dry, lightweight comfort
- Greater stretch and recovery
- Soft feel, breathable performance
- Moisture-wicking performance fabric
- Satin Label
- Superior Retail Fit : XS - 2XL



RRP : 49.90 MYR / 19.90 SGD

Customized orders are accepted with MOQ 50pcs & above.

Size	XS	S	M	L	XL	2XL
Waist Relaxed	33	35	38	40	43	45
Waist Extended	38	40	43	45	48	51
Outseam	99	101	104	106	109	111

*MEASUREMENTS ARE PRESENTED IN CM

#STYLE THEM YOUR WAY



CRB 1100 # VANGUARD BASKETBALL SUIT



CRB 1100 Vanguard Basketball Suit

CROSSRUNNER®



CRB 1101
Red
Maroon / White



CRB 1102
Royal
Daisy / White



CRB 1103
Maroon
Light Grey / White



CRB 1104
Black
Orange / White

- Performance Eyelet
- V neckline
- Contrast color matching panel design
- Elastic waistband
- Moisture-wicking performance fabric
- Antimicrobial, Anti-odor
- Extra mobility & range of motion
- Breathable performance
- Best for training & lifestyle
- Quick-dry, lightweight material
- Tagless heat transfer label
- Superior Retail Fit : S - 2XL

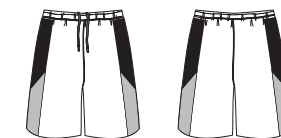
RRP : 69.90 MYR / 27.90 SGD

Customized orders are accepted with MOQ 50pcs & above.



Size	S	M	L	XL	2XL
Width	48	51	53	56	58
Length	68	71	73	76	78

*MEASUREMENTS ARE PRESENTED IN CM



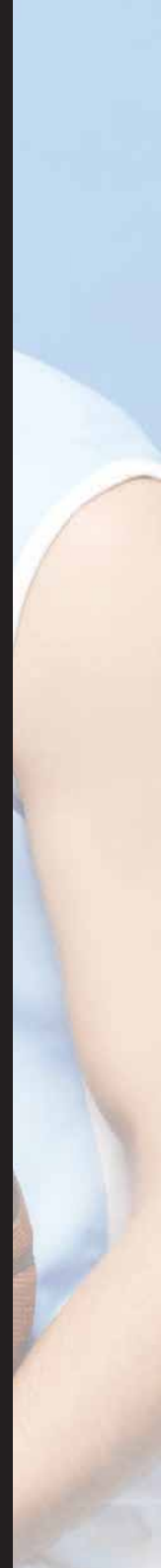
Size	S	M	L	XL	2XL
Waist Relaxed	35	38	40	43	45
Waist Extended	40	43	45	48	51
Outseam	45	48	51	53	56

*MEASUREMENTS ARE PRESENTED IN CM





CRB 1200 # ALPHA BASKETBALL SUIT



CRB 1200 Alpha Basketball Suit



Size	S	M	L	XL	2XL
Width	48	51	53	56	58
Length	68	71	73	76	78

*MEASUREMENTS ARE PRESENTED IN CM



Size	S	M	L	XL	2XL
Waist Relaxed	35	38	40	43	45
Waist Extended	40	43	45	48	51
Outseam	45	48	51	53	56

*MEASUREMENTS ARE PRESENTED IN CM



CRB 1201
Light Blue / White



CRB 1202
Orange / Light Grey



CRB 1203
Red / Black



CRB 1204
Black / Royal

- Performance Flat Knit
- V neckline
- Contrast color panel design
- Elastic waistband
- Moisture-wicking performance fabric
- Antimicrobial, Anti-odor
- Extra mobility & range of motion
- Breathable performance
- Best for training & lifestyle
- Quick-dry, lightweight material
- Tagless heat transfer label
- Superior Retail Fit : S - 2XL

RRP : 69.90 MYR / 27.90 SGD
Customized orders are accepted with MOQ
50pcs & above.





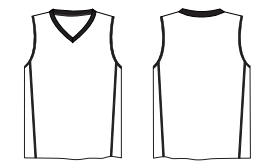
CRB 1300 # SILENCER BASKETBALL SUIT

- Performance Eyelet
- V neckline
- Contrast color piping design
- Elastic waistband
- Moisture-wicking performance fabric
- Antimicrobial, Anti-odor
- Extra mobility & range of motion
- Breathable performance
- Best for training & lifestyle
- Quick-dry, lightweight material
- Tagless heat transfer label
- Superior Retail Fit : S - 2XL

RRP : 69.90 MYR / 27.90 SGD
 Customized orders are accepted with MOQ 50pcs & above.



CRB 1300 Silencer Basketball Suit



Size	S	M	L	XL	2XL
Width	48	51	53	56	58
Length	68	71	73	76	78

*MEASUREMENTS ARE PRESENTED IN CM



Size	S	M	L	XL	2XL
Waist Relaxed	35	38	40	43	45
Waist Extended	40	43	45	48	51
Outseam	45	48	51	53	56

*MEASUREMENTS ARE PRESENTED IN CM



CRB 1301
Orange / Light Grey



CRB 1302
Milo Green / White



CRB 1303
Navy / Daisy



CRB 1304
Black / Royal

O U T E R W E A R



On the go or on the town there's a reason everyone loves our fleece style.
With superior comfort and softness that lasts.

SWEATS

Our sweatshirts are all about outstanding elasticity and warmth, combined with a relaxed silhouette.
The brushed fleece is also popular for its high heat-retention, light weight and comfortable feel.



NOT-SO-REGULAR LOOKS

- ICONIC STYLES WITH CHIC UPDATES FOR THIS SEASON -

NORTH HARBOUR



Styling Collection.

さりげなく取り入れたトレンドアイテムでシンプルスタイルの鮮度が上がります。
爆発の人気は春も継続中!



ROCK x JACKET TREND

This bomber that'll turn up every outfit. Wrap up in the latest coats and jackets and get out-there with your outerwear. Breathe life into your new season layering with the latest coats and jackets from North Harbour. Stick to sporty styling with a bomber, or protect yourself from the elements in a plastic raincoat.

NHJ 1100 **NEW**

Bomber Jacket

- Solid tone long sleeve bomber jacket
- Light weight Polyester Pongee
- Interlining with 210T Polyester
- Wind resistant fabric
- Stand collar neckline
- Elasticated cuffs and hem
- 2 front side pockets • 1 inner pocket
- Front zip fastening

- Satin label
- Superior Retail Fit : XS -2XL

RRP : 69.90 MYR / 27.90 SGD

Size	XS	S	M	L	XL	2XL
Width	51	53	55	57	59	61
Length	64	66	68	70	72	74

*MEASUREMENTS ARE PRESENTED IN CM



NHJ 1101
Light Grey



NHJ 1102
Black



NHJ 1103
Navy



NHJ 1104
Burgundy



Timeless Collection.

一気に暖かみが出て、秋冬らしさがぐっとアップするんです！着こなし次第で高見え抜群！おしゃれ初心者さんでも挑戦しやすいですね！



COMFORT X VERSATILITY

The star garment in streetwear is being renewed. You can go for the classic hooded sweatshirt with zip or the alternative closed one without a hood. We offer sweatshirts in a broad range of colours act as perfect substitutes to give your outfit a fresh and urban twist.

88000
Adult Crewneck Sweatshirt

8.4 oz/yd² **285** g/m²

- 50% cotton / 50% polyester preshrunk fleece knit
- Double-needle stitching at waistband and cuffs
- 2 x 1 rib with spandex
- Sideseamed
- Straight cut suits all body types
- Versatile sweats for all outfits and occasions

- Authentic sweat fabric
- Satin label
- Sizes : XS - 2XL

RRP : 69.90 MYR / 27.90 SGD

Size	XS	S	M	L	XL	2XL
Width	48	51	53	56	61	64
Length	62	65	67	70	73	75

*MEASUREMENTS ARE PRESENTED IN CM



Liked by **im_ch1ng** and **16828 others**

gildan_heavyblend Comfort is key with this chic look! This simple and stylish sweatshirt perfectly combines comfort with style. Available in a variety of colours selection! #stayingwarmandcosy #uniquepersonality #stressfreemoments... more
View all 985 Comments

OEKO-TEX®
 CONFIDENCE IN TEXTILES
STANDARD 100
 68255 OeTI
 Tested for harmful substances
 www.oeko-tex.com/standard100



GILDAN®
 Heavy Blend™

88500

Adult Hooded Sweatshirt

8.4
oz/yd²

285
g/m²

- 50% cotton / 50% polyester preshrunk fleece knit
- Double-needle stitching at waistband and cuffs
- Double-lined hood with color-matched drawcord
- 2 x 1 rib with spandex
- Pouch pockets
- Sideseamed
- Straight cut suits all body types
- Authentic sweat fabric
- Satin label
- Sizes : XS - 2XL

RRP : 69.90 MYR / 27.90 SGD

Size	XS	S	M	L	XL	2XL
Width	48	51	53	56	61	64
Length	62	65	67	70	73	75

*MEASUREMENTS ARE PRESENTED IN CM



STAY COOL & STAY FASHION



30 N
White



40 C
Red



10 C
Heliconia



81 C
Purple



51 C
Royal



32 C
Navy



108 C
Dark Heather



95 H
Sport Grey



36 C
Black





88600 # ADULT FULL ZIP HOODED SWEATSHIRT

OEKO-TEX®
CONFIDENCE IN TEXTILES
STANDARD 100
68255 OeTI
Tested for harmful substances
www.oeko-tex.com/standard100



GILDAN®
Heavy Blend™

88600

Adult Full Zip Hooded Sweatshirt

8.4 oz/yd² 285 g/m

- 50% cotton / 50% polyester preshrunk fleece knit
- Double-needle stitching at waistband and cuffs
- Unlined hood with color-matched drawcord
- Metal Zipper
- Pouch pockets
- 2 x 1 rib with spandex
- Sideseamed
- 9 colors
- Satin label
- Sizes : XS - 2XL

RRP : 69.90 MYR / 27.90 SGD

Size	XS	S	M	L	XL	2XL
Width	49	51	54	59	62	64
Length	59	63	67	70	73	76

*MEASUREMENTS ARE PRESENTED IN CM



THE OUTERWEAR TRENDS



30 N White



40 C Red



10 C Heliconia



81 C Purple



51 C Royal



32 C Navy



108 C Dark Heather



95 H Sport Grey



36 C Black





OEKO-TEX
STANDARD 100
68255 OeTI
Tested for harmful substances
www.oeko-tex.com/standard100

GILDAN®
Heavy Blend™

18700

Adult Vintage Full Zip Hooded Sweatshirt

8.0 oz/yd² **270** g/m²

- 50% cotton / 50% polyester
- Preshrunk fleece knit
- Cross-dyed shades (2 colors in one fabric)
- Air jet yarn = softer feel and reduced pilling
- Pouch pockets • Unlined hood
- Contrast dark grey flatcord
- Brass zipper with contrast dark grey trim
- Quarter-turned to eliminate center crease
- Double-needle stitching at shoulder, armhole, neck, waistband and cuffs
- Sizes : S - XL

RRP : 79.90 MYR / 31.90 SGD

Size	S	M	L	XL
Width	49	54	59	64
Length	65	67	70	72

*MEASUREMENTS ARE PRESENTED IN CM



285 C
Sunset



274 C
Russet



277 C
Meadow



261 C
Moss



284 C
Lilac



278 C
Blackberry



286 C
Midnight



276 C
Tweed



18800

Adult Vintage Cadet Collar Sweatshirt

8.0 **270**
 oz/yd² g/m²

- 50% cotton / 50% polyester
- Preshrunk fleece knit
- Cross-dyed shades (2 colors in one fabric)
- Self fabric lined collar
- Classic Fit
- Contrast dark grey twill tape
- Double-needle stitching at shoulder, armhole, neck, waistband and cuffs

- Air jet yarn = softer feel and reduced pilling
- 1/4 brass zipper with contrast dark grey trim
- Quarter-turned to eliminate center crease
- Authentic sweat fabric
- Sizes : S - XL

RRP : 79.90 MYR / 31.90 SGD

Size	S	M	L	XL
Width	51	56	60	66
Length	68	71	73	76

*MEASUREMENTS ARE PRESENTED IN CM

AMAZING STREET STYLES





CROSSRUNNER®



Size	S	M	L	XL	2XL	3XL
Width	51	53	56	58	60	63
Length	70	72	75	77	80	82

*MEASUREMENTS ARE PRESENTED IN CM

- 60% Cotton 40% Polyester CVC Fleece
- Varsity style jacket with tipping detail
- Long sleeves • Classic fit
- Striped rib-knit cuffs & collar
- Short stand collar
- Slanted welt pockets
- Straight cut suits all body types
- Authentic sweat fabric
- Satin Label
- Superior Retail Fit : S - 3XL

RRP : 69.90 MYR / 27.90 SGD
 Customized orders are accepted with MOQ 50pcs & above.

CRJ 1100
Varsity Jacket



CRJ 1101
Red / White



CRJ 1102
Black / White



CRJ 1103
Royal / White

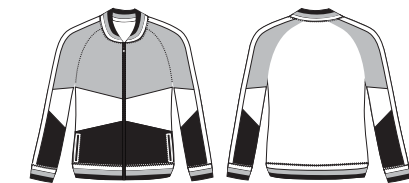


CRJ 1104
Navy / White





- Sublimated Casual Jacket
- Performance Interlock
- Multi tone design
- Zip up fastening
- Mandarin stand collar
- Slanted welt pockets
- Rib collar, cuffs and hem
- Lightweight material
- Soft feel, breathable performance
- Moisture-wicking performance fabric
- Heritage classic detailing
- Relaxed fit
- Satin Label
- Superior Retail Fit : XS - 2XL



RRP : 79.90 MYR / 31.90 SGD

Customized orders are accepted with MOQ 50pcs & above.

Size	XS	S	M	L	XL	2XL
Width	48	51	53	56	58	60
Length	68	68	71	71	73	73

*MEASUREMENTS ARE PRESENTED IN CM



NEW **CRJ 1200**
Lifestyle Jacket



CRJ 1201
Navy
Red / White



CRJ 1202
Daisy
White / Navy



CRJ 1203
Lt. Blue
Daisy / Black



CRJ 1204
Royal
White / Black

SO PRO AND



VERY YOU.

Work outfits for every casual and formal occasion. Fresh, comfortable and self-expressed for a more productive work day.

COZY + CLASSY



THE STAR GARMENTS

Light and comfortable, wear the perfect design for any moment

CHARACTERISTIC



NHB 1400

DESIGNED TO DRESS ELEGANTLY



NORTH HARBOUR



TIMELESS SHIRTS

Versatile White

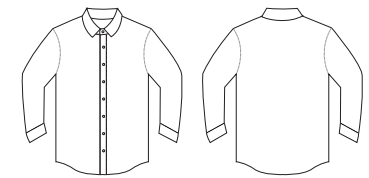
From smart to casual and everything in between, we certainly have the right shirt for you. From detailed to simple but chic, we've got you covered.

NORTH HARBOUR

NHB 1400 PREMIUM OXFORD

- 100% Premium Cotton Oxford
- More opaque material, high-quality fabric
- Pearlized buttons
- Button-through sleeve plackets
- Meticulous attention to detail with a long hem
- Rounded hemline • Woven Label
- Superior Retail Fit :
 - Men fitting from S to 3XL
 - Ladies fitting from S to XL (While stocks last)

RRP : 79.90 MYR / 31.90 SGD
Customized orders are accepted with MOQ 50pcs & above.



Size	S	M	L	XL	2XL	3XL
Width	50	53	55	58	60	63
Length	77	79	81	82	84	85

*MEASUREMENTS ARE PRESENTED IN CM

Size	LS	LM	LL	LXL
Width	42	45	47	50
Length	61	64	65	66

*MEASUREMENTS ARE PRESENTED IN CM



NHB 1401
Black



NHB 1402
White



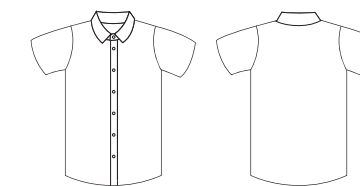
NHB 1403
Charcoal



NORTH HARBOUR

NHB 1500

Premium Oxford Short Sleeve



Size	S	M	L	XL	2XL	3XL
Width	50	53	55	58	60	63
Length	77	79	81	82	84	85

*MEASUREMENTS ARE PRESENTED IN CM

Size	LS	LM	LL	LXL
Width	42	45	47	50
Length	61	64	65	66

*MEASUREMENTS ARE PRESENTED IN CM

SMART DESIGN DRESS SHIRT

- 100% Premium Cotton Oxford
- More opaque material, high-quality fabric
- Regular collar completes the look
- Pearlized buttons
- Great for both casual and dressier looks
- Meticulous attention to detail with a long hem
- Rounded hemline • Woven Label
- Superior Retail Fit :
 - Men fitting from S to 3XL
 - Ladies fitting from S to XL (While stocks last)

RRP : 79.90 MYR / 31.90 SGD
 Customized orders are accepted with MOQ 50pcs & above.



Liked by [lynntan_0508](#) and 84952 others

northharbour Rediscover your favourite staple piece! Simple everyday spring shirts, 😊 5 ways to style a button-down shirt. #FrenchFashionStyle #LowkeyLuxury #OutstandingOutfit #Effortless Elegant #Minimalism... more

[View all 392 Comments](#)



NHB 1501
Black

NHB 1502
White

NHB 1503
Charcoal



NORTH HARBOUR

- 65% Cotton 35% Rayon
- Pearlized buttons
- Wrinkle-resistant even after washing for easy care
- Smoother, more opaque material
- Light and comfortable, high-quality fabric
- Excellent breathability provides cool comfort
- Button-through sleeve plackets
- Meticulous attention to detail with a long hem
- Rounded hemline
- Woven Label
- Superior Retail Fit :
 - Men fitting from S to 3XL
 - Ladies fitting from S to XL (While stocks last)

RRP : 79.90 MYR / 31.90 SGD

Customized orders are accepted with MOQ 50pcs & above.

Size	S	M	L	XL	2XL	3XL
Width	50	53	55	58	60	63
Length	77	79	81	82	84	85

*MEASUREMENTS ARE PRESENTED IN CM

Size	LS	LM	LL	LXL
Width	42	45	47	50
Length	61	64	65	66

*MEASUREMENTS ARE PRESENTED IN CM



NHB 2000

Cotton Rayon Shirt

GREAT FOR BOTH CASUAL AND DRESSIER LOOKS.



NHB 2001
Light Blue



NHB 2002
Gravel



NHB 2003
Carolina Blue



NHB 1700 - Synergy Racewear

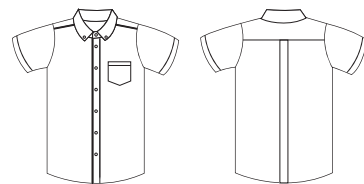
- 65% Viscose 35% Polyester
- Pearlized buttons
- Front button placket
- Pocket on the chest
- Contrast piping design
- Meticulous attention to detail with a long hem
- Rounded hemline
- Woven Label
- Superior Retail Fit :
 - Men fitting from S to 3XL
 - Ladies fitting from S to XL (While stocks last)

Size	S	M	L	XL	2XL	3XL
Width	50	53	55	58	60	63
Length	77	79	81	82	84	85

*MEASUREMENTS ARE PRESENTED IN CM

Size	LS	LM	LL	LXL
Width	42	45	47	50
Length	61	64	65	66

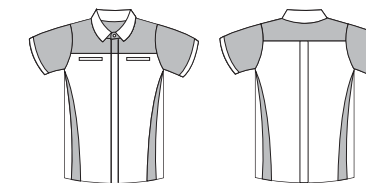
*MEASUREMENTS ARE PRESENTED IN CM



NHB 1701 Lavender / White NHB 1702 Royal / White NHB 1703 Navy / White NHB 1704 Orange / White NHB 1705 Charcoal / White NHB 1706 Red / White

RRP : 69.90 MYR / 27.90 SGD
Customized orders are accepted with MOQ 50pcs & above.

NHB 1800 Impact Racewear



Size	S	M	L	XL	2XL	3XL
Width	50	53	55	58	60	63
Length	77	79	81	82	84	85

*MEASUREMENTS ARE PRESENTED IN CM

Size	LS	LM	LL	LXL
Width	42	45	47	50
Length	61	64	65	66

*MEASUREMENTS ARE PRESENTED IN CM



PERFECT FOR MORE FORMAL OCCASION

- 65% Viscose 35% Polyester
- Pearlized buttons
- Front button placket
- Welt pocket on the chest
- Contrast color panel design
- Meticulous attention to detail with a long hem
- Rounded hemline
- Woven Label
- Superior Retail Fit :
 - Men fitting from S to 3XL
 - Ladies fitting from S to XL (While stocks last)

RRP : 69.90 MYR / 27.90 SGD
Customized orders are accepted with MOQ 50pcs & above.



NHB 1801 Gold / Royal NHB 1802 Sapphire / White NHB 1803 Red / Gravel NHB 1804 Dark Charcoal / Lime





NHB 1900 - Smart Racewear

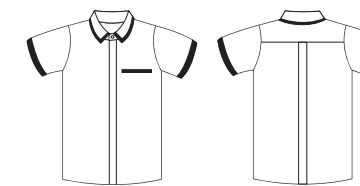
- 65% Viscose 35% Polyester
- Pearlized buttons
- Front button placket • Pocket on the chest
- Contrast color design collar & sleeve
- Meticulous attention to detail with a long hem
- Rounded hemline • Woven Label
- Superior Retail Fit :
 - Men fitting from S to 3XL
 - Ladies fitting from S to XL (While stocks last)

Size	S	M	L	XL	2XL	3XL
Width	50	53	55	58	60	63
Length	77	79	81	82	84	85

*MEASUREMENTS ARE PRESENTED IN CM

Size	LS	LM	LL	LXL
Width	42	45	47	50
Length	61	64	65	66

*MEASUREMENTS ARE PRESENTED IN CM



RRP : 69.90 MYR / 27.90 SGD
 Customized orders are accepted with MOQ 50pcs & above.



NHB 1901
White / Navy



NHB 1902
Sapphire / White



NHB 1903
Red / Black



NHB 1904
Charcoal / White



NHB 2600 - Murphy Racewear

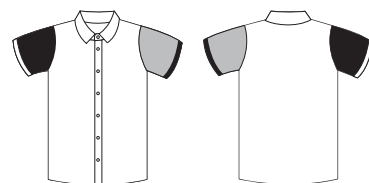
- 65% Viscose 35% Polyester
- Pearlized buttons
- Front button placket
- Bold color matching sleeve
- Meticulous attention to detail with a long hem
- Rounded hemline • Woven Label
- Superior Retail Fit :
 - Men fitting from S to 3XL
 - Ladies fitting from S to XL (While stocks last)

Size	S	M	L	XL	2XL	3XL
Width	50	53	55	58	60	63
Length	77	79	81	82	84	85

*MEASUREMENTS ARE PRESENTED IN CM

Size	LS	LM	LL	LXL
Width	42	45	47	50
Length	61	64	65	66

*MEASUREMENTS ARE PRESENTED IN CM



RRP : 69.90 MYR / 27.90 SGD

Customized orders are accepted with MOQ 50pcs & above.



NHB 2601
White
Red / Navy



NHB 2602
Navy
White / Red



NHB 2603
Red
White / Black



NHB 2604
Royal
Charcoal / Navy



NHB 2605
Sapphire
Navy / White



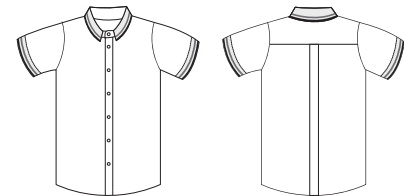


- 65% Viscose 35% Polyester
- Knitted tipping collar & cuffs
- Front button placket
- Pearlized buttons
- More opaque material, high-quality fabric
- Meticulous attention to detail with a long hem
- Rounded hemline
- Great for both casual and dressier looks
- Classic Fit • Woven Label
- Superior Retail Fit : S -3XL

RRP : 69.90 MYR / 27.90 SGD
 Customized orders are accepted with MOQ 50pcs & above.

Size	S	M	L	XL	2XL	3XL
Width	50	53	55	58	60	63
Length	77	79	81	82	84	85

*MEASUREMENTS ARE PRESENTED IN CM



NEW NHB 3000
 Cyril Shirt



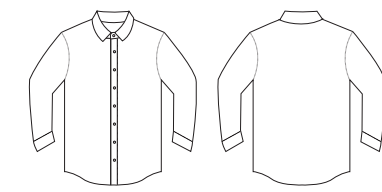
NHB 3001 White / Red / Black
 NHB 3002 Red / White / Navy
 NHB 3003 Navy White / Red
 NHB 3004 Black White / Red



NORTH HARBOUR

NHB 3100

NEW Virgil Shirt



Size	S	M	L	XL	2XL	3XL
Width	50	53	55	58	60	63
Length	77	79	81	82	84	85

*MEASUREMENTS ARE PRESENTED IN CM



MADE TO BRING OUT THE BEST IN YOU

- 100% Soft cotton denim
- Pearlized buttons
- Front button placket
- Regular collar completes the look
- Button-through sleeve plackets
- Great for both casual and dressier looks
- Light and comfortable, soft hand feel material
- Meticulous attention to detail with a long hem
- Rounded hemline
- Woven Label
- Superior Retail Fit : S -3XL

RRP : 69.90 MYR / 27.90 SGD
 Customized orders are accepted with MOQ 50pcs & above.



NHB 3101 Sky NHB 3102 Earl Blue NHB 3103 Midnight





CONTEMPORARY SIGNATURE BRAND

Embracing the beauty of all women. Sarra is designed to accentuate the features of contemporary Muslim Women. We are very concerned about the conscience and modesty while featuring modern life.

SARRA®



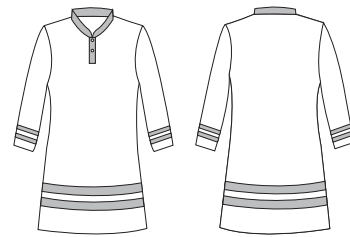


SARRA®
Muslimah Wear Collection

SMW 1300
Inayah

- 40% Cotton 60% Polyester
- Mandarin collar
- Classic two color panel
- Waistline pocket feature
- Superior Retail Fit :
- Ladies fitting from S to 3XL

RRP : 59.90 MYR / 23.90 SGD
Customized orders are accepted with MOQ 50pcs & above.



Size	S	M	L	XL	2XL	3XL
Width	48	51	53	56	58	60
Length	89	91	94	96	99	101

*MEASUREMENTS ARE PRESENTED IN CM



SMW 1301
Daisy / Forest Green



SMW 1302
Maroon / Heliconia



SMW 1303
Black / Charcoal



SMW 1304
Purple / Red

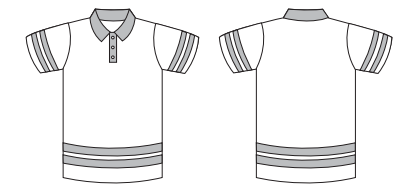
SARRA®
Muslimin Wear Collection



SMW 1300M - Iyadh

- 40% Cotton 60% Polyester
- Welded collar and placket
- Classic two color panel
- Polo collar neckline
- Regular fit
- Button fastening
- Superior Retail Fit :
- Men fitting from S to 3XL

RRP : 59.90 MYR / 23.90 SGD
Customized orders are accepted with MOQ 50pcs & above.



Size	S	M	L	XL	2XL	3XL
Width	48	51	53	56	58	60
Length	68	71	73	76	79	81

*MEASUREMENTS ARE PRESENTED IN CM



SMW 1301 M
Daisy / Forest Green



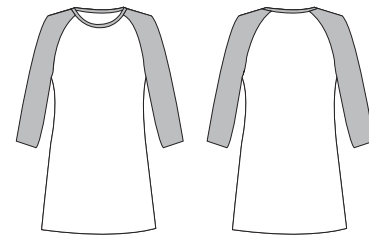
SMW 1302 M
Maroon / Heliconia



SMW 1303 M
Black / Charcoal



SMW 1304 M
Purple / Red



EMBRACING THE BEAUTY

- 40% Cotton 60% Polyester
- Sporty Raglan design
- Waistline pocket feature
- New asian A shape muslimah cutting
- Woven label
- Superior Retail Fit :
- Ladies fitting from S to 3XL

RRP : 59.90 MYR / 23.90 SGD
Customized orders are accepted with
MOQ 50pcs & above.

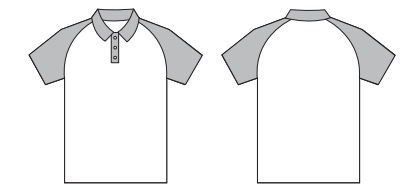
Size	S	M	L	XL	2XL	3XL
Width	48	51	53	56	58	60
Length	89	91	94	96	99	101

*MEASUREMENTS ARE PRESENTED IN CM



SMW 1500M - Adam

- 40% Cotton 60% Polyester
- Welded collar and placket
- Sporty Raglan design
- Polo collar neckline
- Regular fit
- Button fastening
- Superior Retail Fit :
- Men fitting from S to 3XL



RRP : 59.90 MYR / 23.90 SGD
Customized orders are accepted with MOQ
50pcs & above.

Size	S	M	L	XL	2XL	3XL
Width	48	51	53	56	58	60
Length	68	71	73	76	79	81

*MEASUREMENTS ARE PRESENTED IN CM



SMW 1501 M Black / Royal SMW 1502 M Maroon / Charcoal SMW 1503 M Navy / Red SMW 1504 M Navy / Sapphire SMW 1505 M Black / Charcoal SMW 1506 M Maroon / Heliconia

SMW 1500 - Ammara



SMW 1501 Black / Royal SMW 1502 Maroon / Charcoal SMW 1503 Navy / Red



SMW 1504 Navy / Sapphire SMW 1505 Black / Charcoal SMW 1506 Maroon / Heliconia

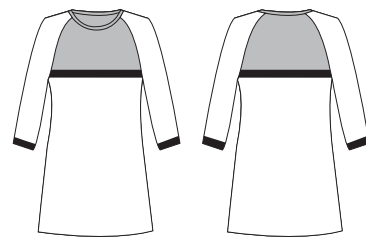




SMW 1600 # FADHILAH

SMW 1600
Fadhilah

- 100% Performance Dry Pique
- Round neckline
- Sporty raglan design
- Waistline pocket feature
- New asian A shape muslimah cutting
- Soft and smooth handfeel
- Antimicrobial, Anti-odor
- breathable performance
- Quick-dry, lightweight material
- Moisture-wicking performance fabric
- Woven Label
- Superior Retail Fit : Ladies fitting from S to 3XL



RRP : 59.90 MYR / 23.90 SGD
Customized orders are accepted with MOQ 50pcs & above.

Size	S	M	L	XL	2XL	3XL
Width	48	51	53	56	58	60
Length	89	91	94	96	99	101

*MEASUREMENTS ARE PRESENTED IN CM



SMW 1601
Navy / Heliconia / White



SMW 1602
Charcoal / White / Black



SMW 1603
Forest Green / Daisy / Maroon



SMW 1700 - Airish



- Sublimated Muslimah
- Performance Interlock
- New asian A shape muslimah cutting
- Soft and smooth handfeel
- Antimicrobial, Anti-odor
- Breathable performance
- Woven Label
- Superior Retail Fit :
- Ladies fitting from S to 3XL

RRP : 59.90 MYR / 23.90 SGD
Customized orders are accepted with MOQ 50pcs & above.



SMW 1701
Heliconia / Navy

SMW 1702
Light Grey / Royal

SMW 1703
Daisy / Charcoal

Size	S	M	L	XL	2XL	3XL
Width	48	51	53	56	58	60
Length	89	91	94	96	99	101

*MEASUREMENTS ARE PRESENTED IN CM



NEW SMW 1800 - Obadiah



SMW 1801
Heliconia

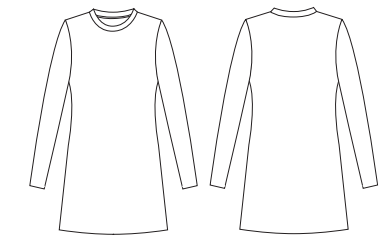
SMW 1802
Irish Green

SMW 1803
Purple

SMW 1804
Black

Size	S	M	L	XL	2XL	3XL
Width	48	51	53	56	58	60
Length	89	91	94	96	99	101

*MEASUREMENTS ARE PRESENTED IN CM



TOP OF THE CLASSIC

- 100% Performance Dry Pique
- Solid coloured muslimah top
- Round neckline
- Hidden side pocket
- Simple and contemporary design
- New asian A shape muslimah cutting
- Lightweight material
- Extra mobility & range of motion
- Soft feel, breathable performance
- Ideal for leisure and formal activity
- Moisture-wicking performance fabric
- Woven label
- Superior Retail Fit : S -3XL

RRP : 49.90 MYR / 19.90 SGD
Customized orders are accepted with MOQ 50pcs & above.

MUSLIMAH WEAR COLLECTION



SARRA®



SMW 1900 - Miles

- 100% Soft cotton denim
- Pearlized buttons
- Front button placket
- Soft hand feel material
- Light and comfortable
- Regular collar completes the look
- New asian A shape muslimah cutting
- Great for both casual and dressier looks
- Woven Label
- Superior Retail Fit : S -3XL

RRP : 89.90 MYR / 36.90 SGD
 Customized orders are accepted with MOQ 50pcs & above.

Size	S	M	L	XL	2XL	3XL
Width	48	51	53	56	58	60
Length	89	91	94	96	99	101

*MEASUREMENTS ARE PRESENTED IN CM

AS UNIQUE AS YOU ARE



SMW 1901
Sky



SMW 1902
Earl Blue



SMW 1903
Midnight



BASEBALL CAP

야구모자

ORIGINALS BY NORTH HARBOUR - KIND OF COOL TREND



ANGLES ARE ATTITUDES

NHC 1100 Baseball Cap

- Acrylic Twill
- 6-panel Fitted Cap
- Seamed Front Panel with Full Buckram
- 6 Sewn Eyelets
- Pro Stitch on Crown
- 6 Rows of Stitching on Visor
- Matching Fabric Undervisor
- Matching Color Sweatband
- Metal Sliding Buckle Closure

RRP : 26.90 MYR / 10.90 SGD



LITTLE THING THAT MAKES A BIG DIFFERENCE



NHC 1101
White



NHC 1102
Grey



NHC 1103
Black



NHC 1104
Daisy



NHC 1105
Forest Green



NHC 1106
Red



NHC 1107
Maroon



NHC 1108
Royal



NHC 1109
Navy



NHC 1200 # SNAPBACK



NORTH HARBOUR

NHC 1200 Snapback

- Acrylic Twill
- 6-panel Fitted Cap
- Seamed Front Panel with Full Buckram
- 6 Sewn Eyelets
- Pro Stitch on Crown
- 6 Rows of Stitching on Visor
- Matching Fabric Undervisor
- Matching Color Sweatband
- Adjustable Snap Closure

RRP : 29.90 MYR / 11.90 SGD

HEADWEAR FOR STYLE AND SHADE - 2ND TO NONE



NHC 1201
White



NHC 1202
Grey



NHC 1203
Black



NHC 1204
Forest Green



NHC 1205
Red



NHC 1206
Royal



NHC 1207
Navy

SIGNATURE HAND TOWEL **NEW**



NORTH HARBOUR

NHT 1100 - SOFT TOUCH HAND TOWEL

- Material: 100% Cotton
- Weight: 80 gsm
- Soft Touch hand feel
- Ideal for a wide variety of uses
- Striped border offers a touch of appeal
- Exceptionally plush, rich and long lasting
- Cozy comfort, durable and highly absorbent

- Simplicity and elegance
- Available in 5 colors.
- Easy care, machine washable
- Satin label
- Size: 32cm x 70cm

RRP : 29.90 MYR / 11.90 SGD



NHT 1101
Soft White



NHT 1102
Corn Silk



NHT 1103
Mint Cream



NHT 1104
Dust Blue



NHT 1105
Watermelon

GET INSPIRED TO **FEEL GOOD** AND BE YOUR **ABSOLUTE**

SIGNATURE SPA TOWEL **NEW**



NORTH HARBOUR

NHT 2100 - SOFT TOUCH SPA TOWEL

- Material: 100% Cotton
- Weight: 400 gsm
- Soft Touch hand feel
- Ideal for washroom ensemble
- Striped border offers a touch of appeal
- Exceptionally plush, rich and long lasting
- Cozy comfort, durable and highly absorbent

- Simplicity and elegance
- Available in 5 colors.
- Easy care, machine washable
- Satin label
- Size: 70cm x 140cm

RRP : 49.90 MYR / 19.90 SGD



BRING A **MODERN EDGE** TO YOUR **LIVING AREA**

..... SUBLIMATION TREND

UNLEASHING
YOUR IMAGINATION



100%
Vibrant Color

Sublimation by
CROSSRUNNER®

Powered by
Mimaki Japan Sublimation Printer
& Monti Italy Heat Press Machine.



..... NO DESIGNS LIMIT

The finish is smooth, soft, and stylish because it literally becomes one with the substrate. This is perfect to keep the soft-hand feel of the original garment. It allows you to print full color transfers onto your shirts instead of setting up tons of screens for traditional screen printing.



Dye Sublimation is an awesome printing technique that allows for vibrant, full color, all-over print tees and garments.



Images on fabric won't fade or crack even after multiple washings. Images on hard substrates will not chip, peel or scratch.

DECORATING TECHNIQUES

With a wide selection of highly receptive fabrics and finishes, we have a style to fit your technique, whatever it is.



Screen Print

SCREEN PRINTING (OR SILK SCREENING) IS A TECHNIQUE THAT USES STENCILS AND INK TO CREATE DESIGNS ON GARMENTS. IT IS THE MOST ECONOMICAL METHOD FOR PRODUCING LARGE QUANTITIES THAT INVOLVE COTTON OR COTTON-BLEND GARMENTS.



Direct To Garment

A SPECIALIZED INKJET PRINTER APPLIES INKS DIRECTLY TO THE GARMENT, WHERE THE FIBERS ABSORB THE INK TO CREATE A VERY DURABLE DESIGN. IT WORKS WELL FOR SHORT RUNS OR FULL-COLOR PRINTING ON HIGH STITCH DENSITY GARMENTS.



Embroidery

EMBROIDERY IS SEWING A DESIGN, TYPE OR LOGO ONTO A GARMENT WITH SPECIAL THREAD. THIS TECHNIQUE GIVES GARMENTS A HIGHER PERCEIVED VALUE AND WORKS PARTICULARLY WELL ON HEAVIER WEIGHT GARMENTS SUCH AS FLEECE.



Sublimation

ALSO CALLED DYE SUBLIMATION, THIS PROCESS USES HEAT-SENSITIVE INKS TO CREATE FULL-COLOR, PHOTO-QUALITY REPRODUCTIONS OF DIGITAL IMAGES THAT LAST. SUBLIMATION IS WELL SUITED FOR 100% POLYESTER GARMENTS.



Heat Transfer

HEAT TRANSFER INVOLVES COMBINING HEAT AND PRESSURE TO TRANSFER IMAGES TO GARMENTS. THIS IS A GREAT OPTION FOR DETAILED PRINTS, CUSTOMIZATION, SHORTER RUNS AND QUICK TURNAROUND TIMES.

FIT ALL SCENE FIT ALL SEASON



Ideal for teamwear!

Print your own teamwear! Kit out your school sports coach and supporters' team in matching printed tees!



Ideal for short-sleeved summer staffwear!

Because they have collars, polo shirts keep your staff looking professional in customer-facing roles. At trade shows and conventions, dress your staff in matching staffwear for a more polished look!



Perfect for festivals! Great for outdoor leisure!

Music festivals and other entertainment events are even more fun when your friends or family are all sporting matching original printwear!



It's About Having An Active Lifestyle, Staying Healthy, And Making The Right Decisions.



COLLECTIONS 2019-2020

STYLE HACK

さりげなく取り入れたトレンドアイテムでシンプルスタイルの鮮度が上がります。

爆発的人気は今年も継続中！

